



Program Factbook

2011

Unity College Program Factbook

Contents

July 2011

The Unity College Program Factbook contains information about each individual major arranged by centers. The information for individual majors can be found under the center in which the major is assigned. The data included in this Factbook are from fall 2003 to fall 2010. The beginning date was chosen based on the last major curriculum revision. The Factbook will be updated every summer to include the previous academic year's information. The Factbook will include no less than five years worth of data.

Each Center Section Contains:

Enrollment Indicators

- Cohort Enrollment Headcount

- % of Cohort as Compared to Entering Class

- Students enroll in the Student Academic Growth Experience (SAGE) program

- Enrollment by Gender

- Enrollment by Incoming vs. Transfer

- Headcount by In State/Out of State

Average High School Grade Point Average for College Wide Cohort

- Average HS GPA's (for those students who submitted scores)

Average SAT and ACT Scores

- Average SAT scores (for those students who submitted scores)

- Average ACT scores (for those students who submitted scores)

Retention Indicators

- Retention to 2nd semester

- Retention to 3rd semester

Completion Indicators

- 4 Year Graduation Rates

- 6 Year Graduation Rates

Quick Reference

- Page 4 Center for Biodiversity
- Page 15 Center for Environmental Arts and Humanities
- Page 26 Center for Environmental and Experiential Education
- Page 42 Center for Natural Resource Management and Protection
- Page 60 Center for Sustainability and Global Change
- Page 72 Undecided major data

Any questions or comments about this Program Factbook should be directed to:

Holly Hein
Dean for Institutional Research
207-948-3131 ext. 244
hein@unity.edu

CENTER FOR BIODIVERSITY

Associated Curricula

Ecology (BS)

Environmental Biology (BS)

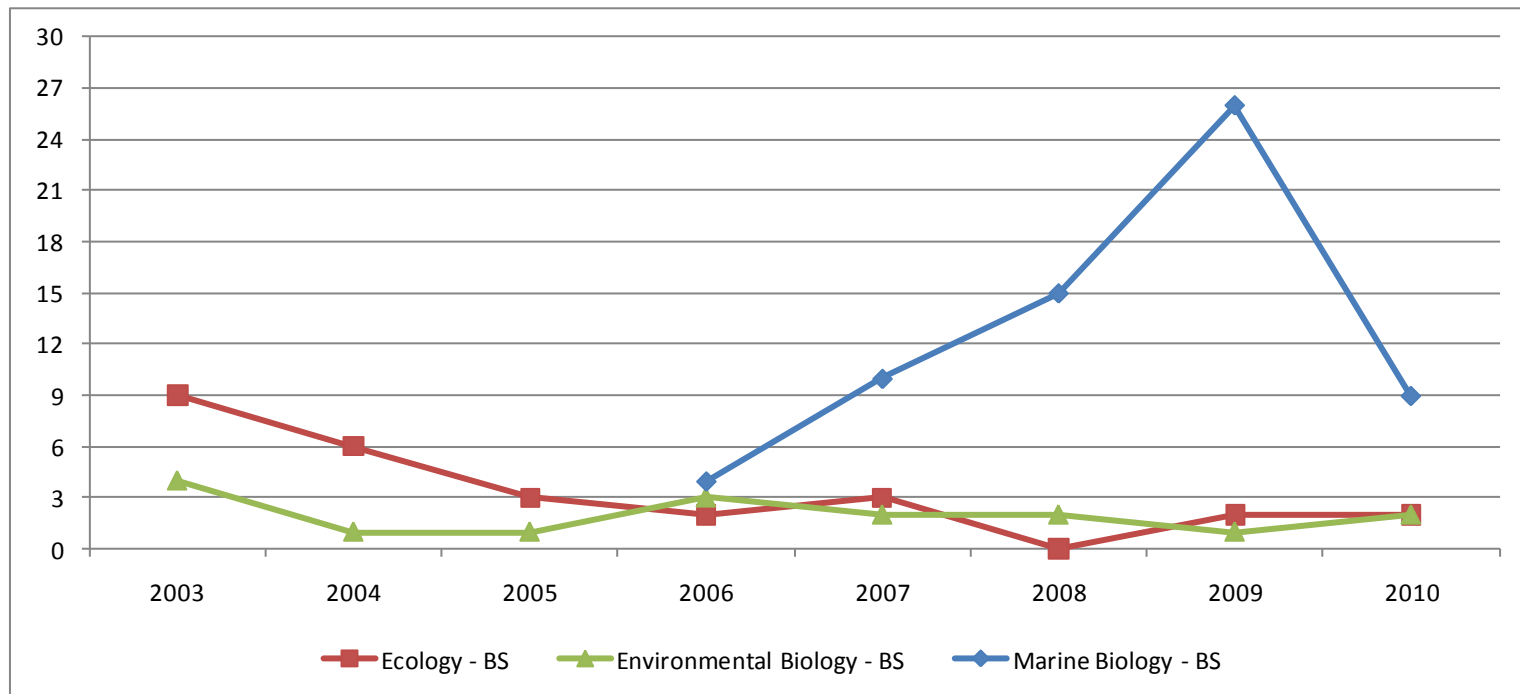
Marine Biology (BS)

Enrollment

The data and charts below show enrollments in majors based on fall entering cohorts. A cohort is comprised of all students entering Unity College for the first time in the fall semester of an academic year.

Headcount

Fall Headcount Incoming Class	2003	2004	2005	2006	2007	2008	2009	2010
Ecology - BS	9	6	3	2	3	0	2	2
Environmental Biology - BS	4	1	1	3	2	2	1	2
Marine Biology - BS				4	10	15	26	9



Percentage Enrolled of Total Headcount

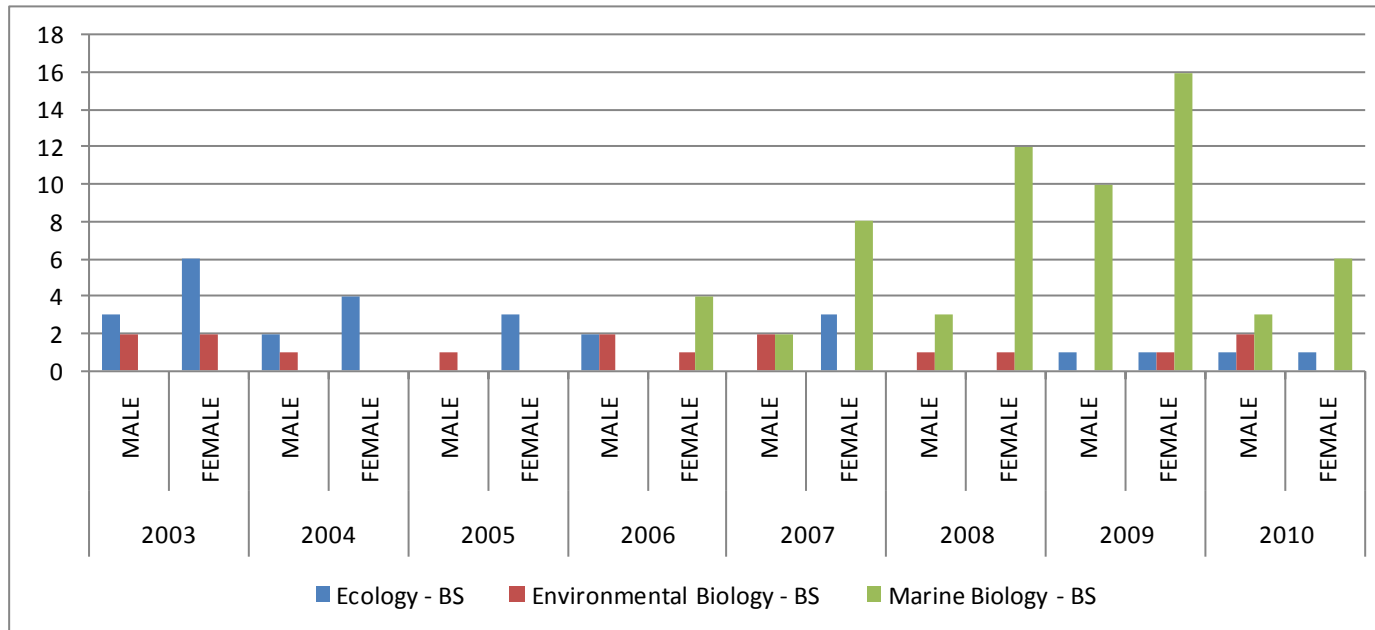
% of Cohort	2003	2004	2005	2006	2007	2008	2009	2010
Ecology - BS	5%	3%	2%	1%	1%	0%	1%	1%
Environmental Biology - BS	2%	1%	1%	2%	1%	1%	1%	1%
Marine Biology - BS				2%	5%	8%	13%	5%

Students Enrolled in the Student Academic Growth Experience

SAGE Enrollment	2003	2004	2005	2006	2007	2008	2009	2010
Ecology - BS		1						
Environmental Biology - BS	1				2	2		
Marine Biology - BS					3	2	2	

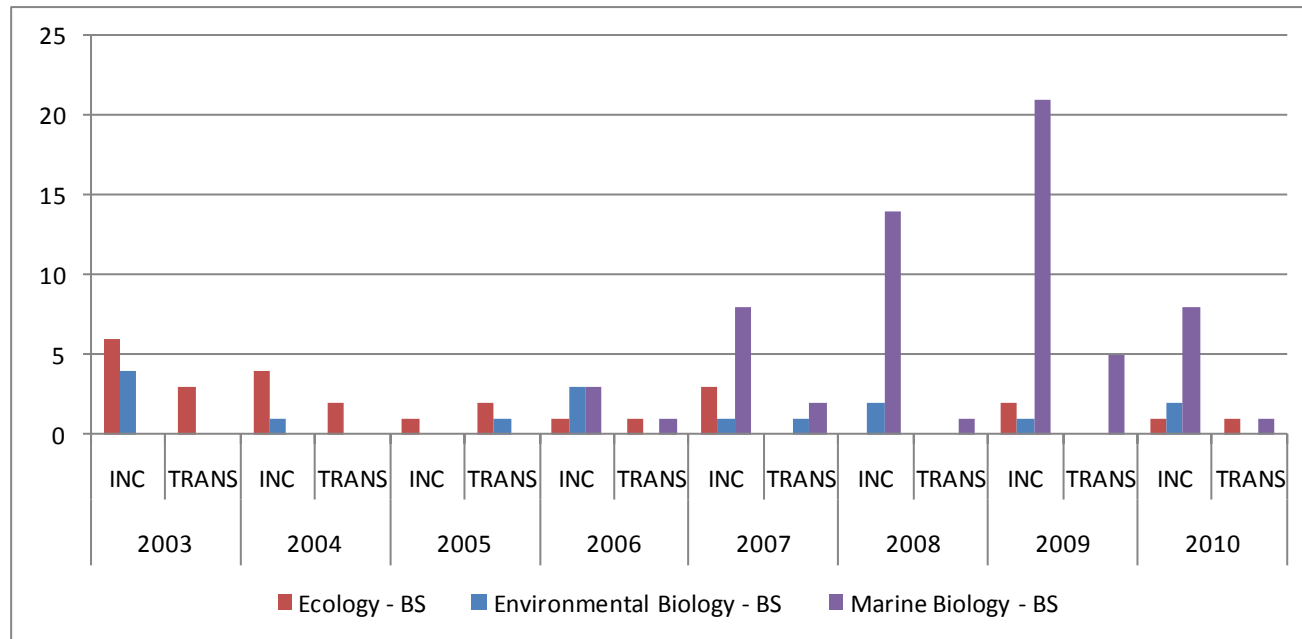
Gender

	2003		2004		2005		2006		2007		2008		2009		2010	
	M	F	M	F	M	F	M	M	F	F	M	F	M	F	M	F
Ecology - BS	3	6	2	4	0	3	2	0	0	3	0	0	1	1	1	1
Environmental Biology - BS	2	2	1	0	1	0	2	1	2	0	1	1	0	1	2	0
Marine Biology - BS	0	0	0	0	0	0	0	4	2	8	3	12	10	16	3	6



Incoming/Transfer

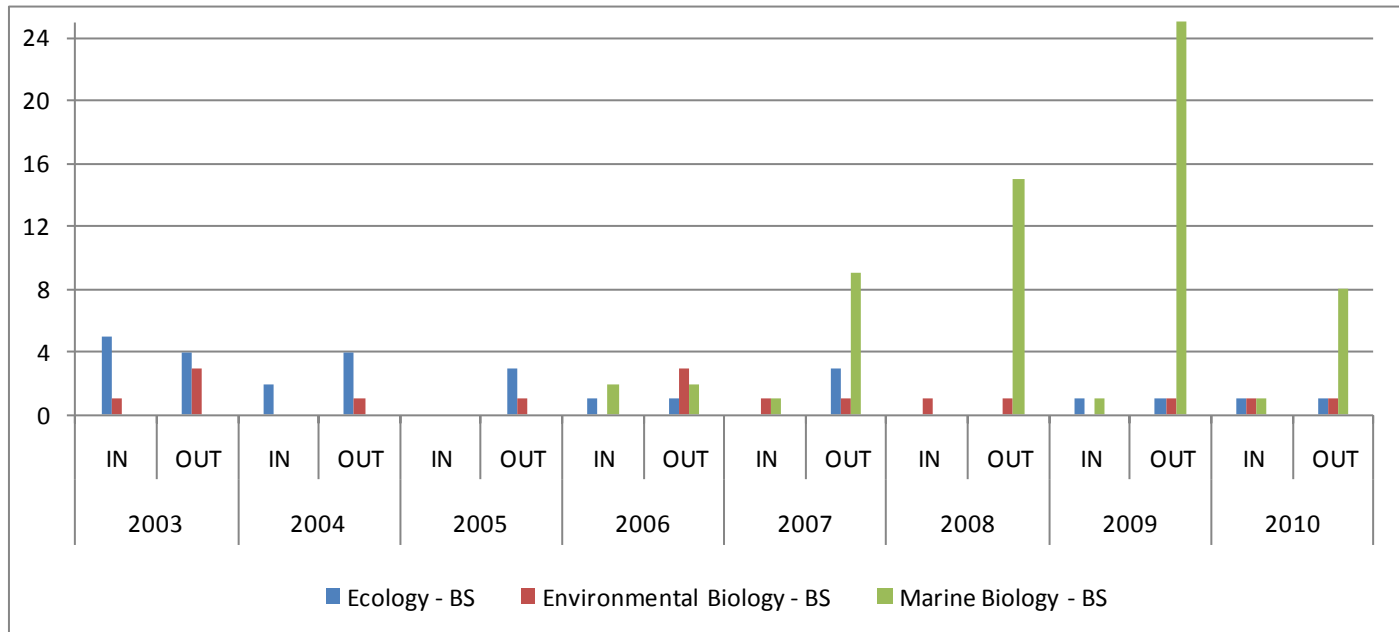
	2003		2004		2005		2006		2007		2008		2009		2010	
	INC	TRANS	INC	TRANS	INC	TRANS	INC	INC	TRANS	TRANS	INC	TRANS	INC	TRANS	INC	TRANS
Ecology - BS	6	3	4	2	1	2	1	1	3	0	0	0	2	0	1	1
Environmental Biology - BS	4	0	1	0	0	1	3	0	1	1	2	0	1	0	2	0
Marine Biology - BS	0	0	0	0	0	0	3	1	8	2	14	1	21	5	8	1



IN STATE/OUT OF STATE

Reflects the cohort as either from Maine or from Out of State.

	2003		2004		2005		2006		2007		2008		2009		2010	
	IN	OUT	IN	OUT	IN	OUT	IN	OUT	IN	OUT	IN	OUT	IN	OUT	IN	OUT
Ecology - BS	5	4	2	4	0	3	1	1	0	3	0	0	1	1	1	1
Environmental Biology - BS	1	3	0	1	0	1	0	3	1	1	1	1	0	1	1	1
Marine Biology - BS	0	0	0	0	0	0	2	2	1	9	0	15	1	25	1	8



Average HS GPA College wide for Cohorts

	2003		2004		2005		2006		2007		2008		2009		2010	
	#Resp	Avg	# Resp	Avg	# Resp	Avg	# Resp	Avg	# Resp	Avg	# Resp	Avg	# Resp	Avg	# Resp	Avg
AVG HS GPA	92	2.95	88	2.93	133	2.92	139	2.94	170	3.02	177	3.13	179	3.16	165	3.24
AVG SAT	138	997	134	1002	124	987	107	965	59	962	130	1490	134	1502	118	1530
AVG ACT	14	22	11	24	3	14	16	20	18	23	21	22	28	22	27	24
Cohort Population	189		178		182		185		203		194		198		179	

Average High School Grade Point Average for Responses

	2003		2004		2005		2006		2007		2008		2009		2010	
	# Resp	Avg	# Resp	Avg	# Resp	Avg	# Resp	Avg	# Resp	Avg	# Resp	Avg	# Resp	Avg	# Resp	Avg
Ecology - BS	2	2.71	5	2.73	1	2.43	1	2.7	3	3.52	2	1.8	2	3.28	2	3.4
Environmental Biology - BS	2	3.88			1	3.17	2	2.89	2	2.29			1	2.74	2	3.75
Marine Biology - BS							2	3.16	8	3.03	13	3.21	26	2.7	8	3.25

Standardized test scores (SAT, ACT) are not required for admission, but are recommended for submission if they are available. In light of that, I am reporting the number of responses, which is the number of students who submitted scores.

Average SAT Comprehensive Scores for Responses

The SAT has under gone some changes in the past few years. Students who took the SAT before March 2005 received two scores (verbal and math) both on a scale from 200-800. So the total score available was 1600. After March of 2005 students received three sections (critical reading, math and writing), each of which are worth up to 800 points. The highest score available would be a 2400. In this factbook we are reporting the Composite score which is all three parts of the SAT summed. Tread lightly - the data may be a little skewed due to the fact that some students who entered in a given cohort since 2005 may have taken either the newer exams or the older ones. There is no way to tell which students may have taken the new or old SAT format.

	2003		2004		2005		2006		2007		2008		2009		2010	
	# Resp	Avg	# Resp	Avg	# Resp	Avg	# Resp	Avg	# Resp	Avg	# Resp	Avg	# Resp	Avg	# Resp	Avg
Ecology - BS	2	1250	2	1075			1	970	1	1080			2	1675	1	1690
Environmental Biology - BS	1	1030	1	1110	1	910			1	920	1	1390	1	1270	2	1645
Marine Biology - BS							2	953	3	856	7	1440	17	1480	4	1420

Average ACT Comprehensive Scores for Responses

The ACT has four sections (English, math, reading comprehension and science, with an optional essay section). A perfect score is 36. Again, we are reporting the Composite score average for the number of responses.

	2003		2004		2005		2006		2007		2008		2009		2010	
	# Resp	Avg	# Resp	Avg	# Resp	Avg	# Resp	Avg	# Resp	Avg	# Resp	Avg	# Resp	Avg	# Resp	Avg
Ecology - BS							1	20							1	30
Environmental Biology - BS																
Marine Biology - BS									1	26	4	24	8	22	3	23

RETENTION

The table below gives the retention to the 2nd semester and retention to the 3rd semester by individual majors. The students no longer in the cohort are separated by “Left College” and “Moved to another Major”. Once a student moves to a different major, they do not become part of the original cohort. Once they move they are not tracked for retention. A cohort, once established, remains the same. However, the information on the status of students in the original cohort can be determined by the table. This will allow you to look for patterns of program movement.

AY	MAJOR	COHORT	RETENTION TO 2ND SEMESTER				RETENTION TO 3RD SEMESTER			
			RETURNED FROM ORIGINAL COHORT	MOVED TO ANOTHER MAJOR	LEFT COLLEGE	ENTERED FROM ANOTHER MAJOR	RETURNED FROM ORIGINAL COHORT	MOVED TO ANOTHER MAJOR	LEFT COLLEGE	ENTERED FROM ANOTHER MAJOR
2003	Ecology	9	1	1-EBIO;2-UND;2-WBIO;1-WILD	2	1-ES;1-UND	1		0	
	Environmental Biology	4	1		3	1-ECOL	1		0	
2004	Ecology	6	6		0		6		0	1-WBIO
	Environmental Biology	1	1		0		1		0	
2005	Ecology	3	3		0		2		1	
	Environmental Biology	1	1		0	1-WCARE	0		1	
2006	Ecology	2	2		0	1-AEL;1-WCARE	2		0	
	Environmental Biology	3	3		0		1		2	
	Marine Biology	4	3	1-CLE	0		2		1	

CONTINUED ON NEXT PAGE

AY	MAJOR	COHORT	RETENTION TO 2ND SEMESTER				RETENTION TO 3RD SEMESTER			
			RETURNED FROM ORIGINAL COHORT	MOVED TO ANOTHER MAJOR	LEFT COLLEGE	ENTERED FROM ANOTHER MAJOR	RETURNED FROM ORIGINAL COHORT	MOVED TO ANOTHER MAJOR	LEFT COLLEGE	ENTERED FROM ANOTHER MAJOR
2007	Ecology	3	3		0		2		1	
	Environmental Biology	2	2		0		1		1	
	Marine Biology	10	6	1-CLE	3		5	1-CLE	0	
2008	Ecology	0				1-EVAN;1-WBIO;1-UND	0			1-CWILD;1-UND
	Environmental Biology	2	1		1	1	0			
	Marine Biology	15	11	1-AQFI;1-CWILD	2	1-CWILD;1-UND	8		1	2-CWILD;1-ECO;1-WBIO
2009	Ecology	2	2				1		1	
	Environmental Biology	1	1				1			
	Marine Biology	26	26				19	1-AT	6	
2010	Ecology	2	2							
	Environmental Biology	2	2							
	Marine Biology	9	9							

GRADUATION RATES

Graduation rates are based on the total entering cohort for each fall semester separated by incoming and transfer students. Total by center is also included. These graduation rates can include students who may have transferred into the specific major while attending the college.

FOUR YEAR RATES

Fall Headcount Incoming Class	189				178				182				185			
	2003				2004				2005				2006			
	INCOMING (166)		TRANSFERS (23)		INCOMING (150)		TRANSFERS (28)		INCOMING (151)		TRANSFERS (31)		INCOMING (152)		TRANSFERS (33)	
	#	% of Cohort	#	% of Cohort	#	% of Cohort	#	% of Cohort	#	% of Cohort	#	% of Cohort	#	% of Cohort	#	% of Cohort
Ecology - BS	4	2%	1	4%	2	1%	4	14%	4	3%	2	6%	2	1%	1	3%
Environmental Biology - BS					1	1%							1	1%	1	3%
Marine Biology - BS	1	1%							1	1%			3	2%		
TOTALS BY CENTER	5	3%	1	4%	3	2%	4	14%	5	3%	2	6%	6	4%	2	6%

SIX YEAR RATES

Instead of reporting all the data again, I am reporting only the additional graduates that fall into the six year rate. If no data is reported, then the six year rate is the same as the four year rate.

Fall Headcount Incoming Class	189				178				182			
	2003				2004				2005			
	INCOMING (166)		TRANSFER (23)		INCOMING (150)		TRANSFER (28)		INCOMING (151)		TRANSFER (31)	
	#	% of Cohort	#	% of Cohort	#	% of Cohort	#	% of Cohort	#	% of Cohort	#	% of Cohort
Ecology - BS					3	2%						
Environmental Biology - BS												
Marine Biology - BS												

Center for Environmental Arts and Humanities

Associated Curricula

Environmental Humanities (BA)

Environmental Writing (BA)

Bachelor of General Studies (BGS)

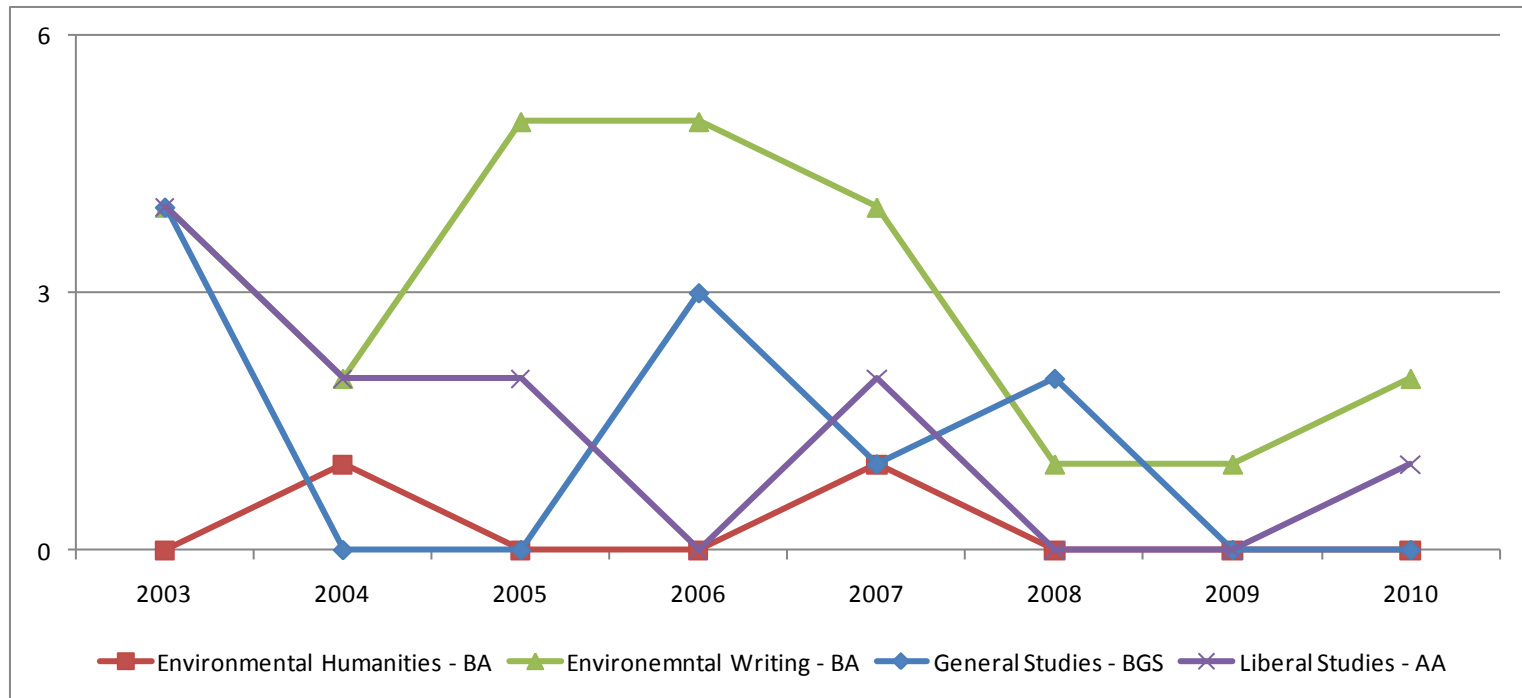
Liberal Studies (AA)

Enrollment

The data and charts below show enrollments in majors based on fall entering cohorts. A cohort is comprised of all students entering Unity College for the first time in the fall semester of an academic year.

Headcount

Fall Headcount Incoming Class	189	178	182	185	203	194	198	179
	2003	2004	2005	2006	2007	2008	2009	2010
Environmental Humanities - BA	0	1	0	0	1	0	0	0
Environmental Writing - BA	4	2	5	5	4	1	1	2
General Studies - BGS	4	0	0	3	1	2	0	0
Liberal Studies - AA	4	2	2	0	2	0	0	1



Percentage Enrolled of Total Headcount

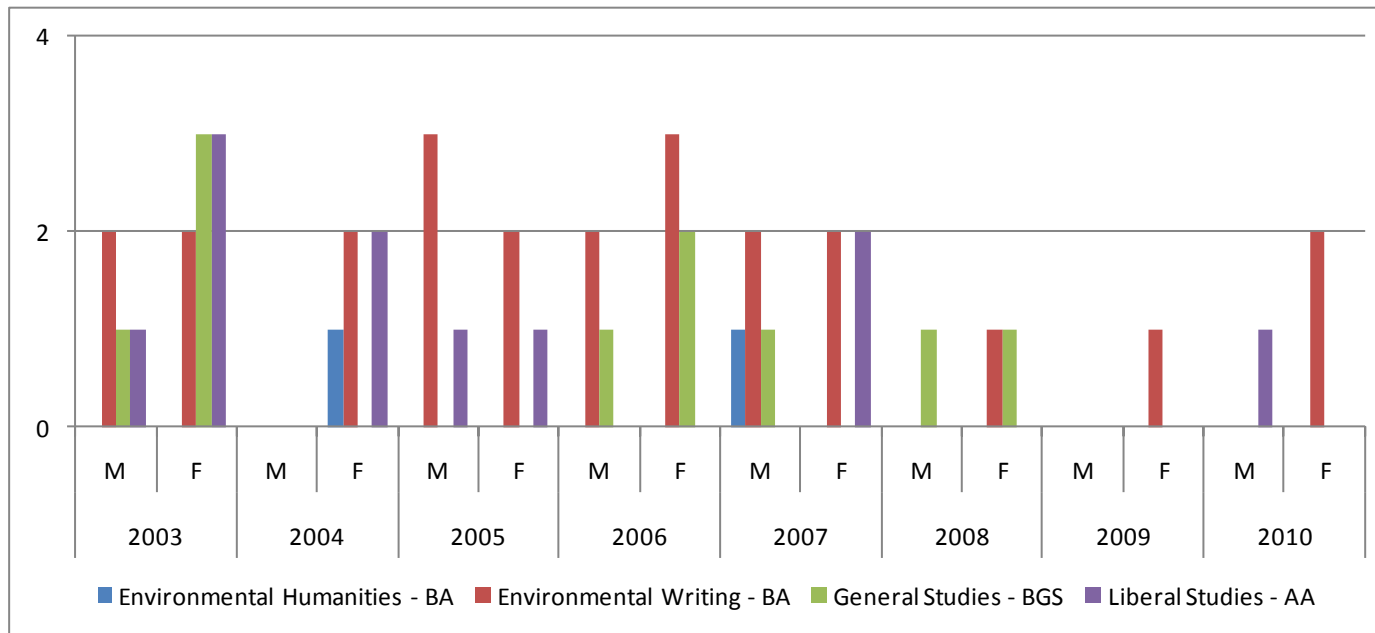
% of Cohort	2003	2004	2005	2006	2007	2008	2009	2010
Environmental Humanities - BA	0%	1%	0%	0%	1%	0%	0%	0%
Environmental Writing - BA	2%	1%	3%	3%	2%	1%	1%	1%
General Studies - BGS	2%	0%	0%	2%	1%	1%	0%	0%
Liberal Arts - AA	2%	1%	1%	0%	1%	0%	0%	1%

Students Enrolled in the Student Academic Growth Experience

SAGE Enrollment	2003	2004	2005	2006	2007	2008	2009	2010
Environmental Humanities - BA								
Environmental Writing - BA				1				
General Studies - BGS				1				
Liberal Studies - AA					1			

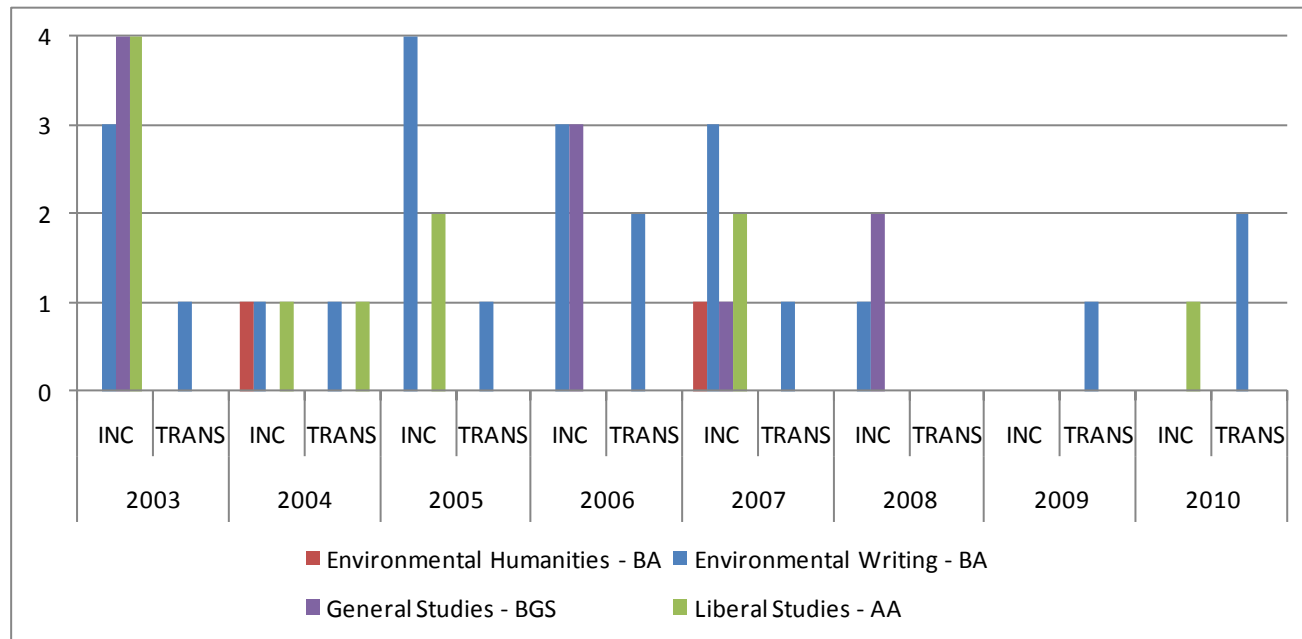
Gender

	2003		2004		2005		2006		2007		2008		2009		2010	
	M	F	M	F	M	F	M	F	M	F	M	F	M	F	M	F
Environmental Humanities - BA	0	0	0	1	0	0	0	0	1	0	0	0	0	0	0	0
Environmental Writing - BA	2	2	0	2	3	2	2	3	2	2	0	1	0	1	0	2
General Studies - BGS	1	3	0	0	0	0	1	2	1	0	1	1	0	0	0	0
Liberal Studies - AA	1	3	0	2	1	1	0	0	0	2	0	0	0	0	1	0



Incoming/Transfer

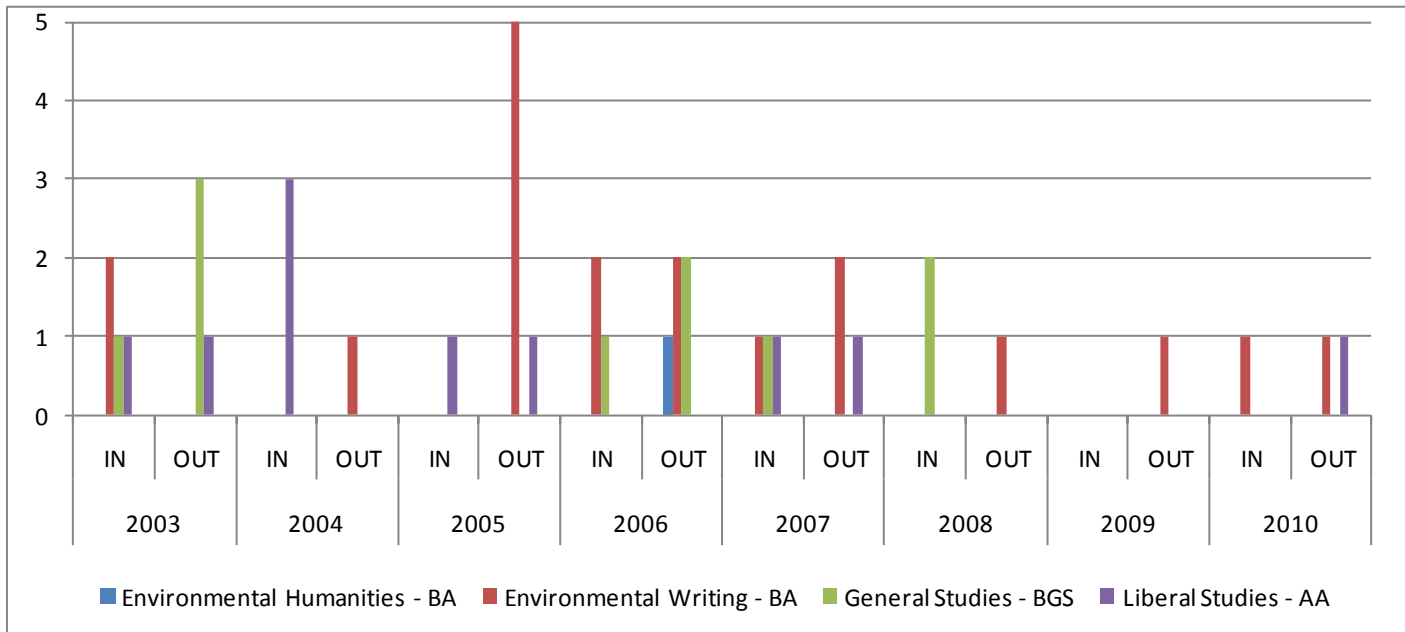
	2003		2004		2005		2006		2007		2008		2009		2010	
	INC	TRANS	INC	TRANS	INC	TRANS	INC	TRANS	INC	TRANS	INC	TRANS	INC	TRANS	INC	TRANS
Environmental Humanities - BA	0	0	1	0	0	0	0	0	1	0	0	0	0	0	0	0
Environmental Writing - BA	3	1	1	1	4	1	3	2	3	1	1	0	0	1	0	2
General Studies - BGS	4	0	0	0	0	0	3	0	1	0	2	0	0	0	0	0
Liberal Studies - AA	4	0	1	1	2	0	0	0	2	0	0	0	0	0	1	0



IN STATE/OUT OF STATE

Reflects the cohort as either from Maine or from Out of State.

	2003		2004		2005		2006		2007		2008		2009		2010	
	IN	OUT	IN	OUT	IN	OUT	IN	OUT	IN	OUT	IN	OUT	IN	OUT	IN	OUT
Environmental Humanities - BA	0	0	0	0	0	0	0	1	0	0	0	0	0	0	0	0
Environmental Writing - BA	2	0	0	1	0	5	2	2	1	2	0	1	0	1	1	1
General Studies - BGS	1	3	0	0	0	0	1	2	1	0	2	0	0	0	0	
Liberal Studies - AA	1	1	3	0	1	1	0	0	1	1	0	0	0	0	0	1



Average HS GPA College wide for Cohorts

	2003		2004		2005		2006		2007		2008		2009		2010	
	#Resp	Avg	# Resp	Avg	# Resp	Avg	# Resp	Avg	# Resp	Avg	# Resp	Avg	# Resp	Avg	# Resp	Avg
AVG HS GPA	92	2.95	88	2.93	133	2.92	139	2.94	170	3.02	177	3.13	179	3.16	165	3.24
AVG SAT	138	997	134	1002	124	987	107	965	59	962	130	1490	134	1502	118	1530
AVG ACT	14	22	11	24	3	14	16	20	18	23	21	22	28	22	27	24
Cohort Population	189		178		182		185		203		194		198		179	

Average High School Grade Point Average for Responses

	2003		2004		2005		2006		2007		2008		2009		2010	
	# Resp	Avg	# Resp	Avg	# Resp	Avg	# Resp	Avg	# Resp	Avg	# Resp	Avg	#Resp	Ave	#Resp	Ave
Environmental Humanities - BA							1	3.2								
Environmental Writing - BA	2	2.87	2	4	1	2.75	4	3.27	1	3.05	1	2.59	1	2.84	1	3.30
General Studies - BGS	3	2.97					1	2.68	1	3	2	3.09				
Liberal Studies - AA	1	3.95	1	3.6	2	3.37			2	2.7					1	3.15

Standardized test scores (SAT, ACT) are not required for admission, but should be submitted if they are available. In light of that, I am also reporting the number of responses, which is the number of student who submitted scores.

Average SAT Comprehensive Scores for Responses

The SAT has under gone some changes in the past few years. Students who took the SAT before March of 2005 received two scores (verbal and math) both on a scale of 200-800. So the total score available was 1600. After March of 2005 students received three sections (reading comprehension, math and writing essay), each of which are worth up to 800 points. The highest score available would be a 2400. In this factbook we are reporting the Composite score which is all three parts of the SAT summed. Tread lightly - the data may be a little skewed due to the fact that some students who entered in a given cohort since 2005 may have taken either the newer exams or the older ones. There is no way to tell which students may have taken the new or old SAT format.

	2003		2004		2005		2006		2007		2008		2009		2010	
	# Resp	Avg	# Resp	Avg	# Resp	Avg	# Resp	Avg	# Resp	Avg	# Resp	Avg	# Resp	Ave	#Resp	Ave
Environmental Humanities - BA			1	1060			1	1150								
Environmental Writing - BA	2	950	1	1095	4	1000	3	927							1	1630
General Studies - BGS	2	1125					1	1350			2	1095				
Liberal Studies - AA	1	1020	1	1110	1	990			2	930						

Average ACT Comprehensive Scores for Responses

The ACT has four sections (English, math, reading comprehension and science, with an optional essay section). A perfect score is 36. Again, we are reporting the Composite score average for the number of responses.

	2003		2004		2005		2006		2007		2008		2009		2010	
	# Resp	Avg	# Resp	Avg	# Resp	Avg	# Resp	Avg	# Resp	Avg	# Resp	Avg	# Resp	Ave	#Resp	Ave
Environmental Humanities - BA																
Environmental Writing - BA											1	23				
General Studies - BGS																
Liberal Studies - AA			1	23												

RETENTION

The table below gives the retention to the 2nd semester and retention to the 3rd semester by individual majors. The students no longer in the cohort are separated by “Left College” and “Moved to another Major”. Once a student moves to a different major, they do not become part of the original cohort. Once they move they are not tracked for retention. A cohort, once established, remains the same. However, the information on the status of students in the original cohort can be determined by the table. This will allow you to look for patterns of program movement.

Most retention initiatives and retention studies concentrate on the 1st to 2nd year retention. Nationally, this is where students choose to stay at an institution or move on. The fall 2007 data will be completed during the fall semester 2008 after determining which students returned for their 3rd semester.

AY	MAJOR	COHORT	RETENTION TO 2ND SEMESTER				RETENTION TO 3RD SEMESTER			
			RETURNED FROM ORIGINAL COHORT	MOVED TO ANOTHER MAJOR	LEFT COLLEGE	ENTERED FROM ANOTHER MAJOR	RETURNED FROM ORIGINAL COHORT	MOVED TO ANOTHER MAJOR	LEFT COLLEGE	ENTERED FROM ANOTHER MAJOR
2003	Environmental Humanities	0								1-UND
	Environmental Writing	4	1	1-EPOL; 2-WCARE		1-BGS	0	0		1-CLE
	Bachelor of General Studies	4	2	1-EW	1	1-EW	1	1-WILD	0	1-WCARE
	Associate of Arts/Liberal Studies	4	3	1-WBIO			2	1-AEL	0	
2004	Environmental Humanities	1	1		0		1		0	1-AA/LS
	Environmental Writing	2	2		0	1-WCON	2		0	
	Bachelor of General Studies	0								
	Associate of Arts/Liberal Studies	2	2		0		1	1-EH	0	
2005	Environmental Humanities	0	0	0	0	1-WCON				1-LH
	Environmental Writing	5	4	1-PRE	0		3		1	
	Bachelor of General Studies	0								
	Associate of Arts/Liberal Studies	2	2		0		1		1	

AY	MAJOR	COHORT	RETENTION TO 2ND SEMESTER				RETENTION TO 3RD SEMESTER			
			RETURNED FROM ORIGINAL COHORT	MOVED TO ANOTHER MAJOR	LEFT COLLEGE	ENTERED FROM ANOTHER MAJOR	RETURNED FROM ORIGINAL COHORT	MOVED TO ANOTHER MAJOR	LEFT COLLEGE	ENTERED FROM ANOTHER MAJOR
2006	Environmental Humanities					1-BGS				
	Environmental Writing	5	3	1-WCARE	1		2		1	
	Bachelor of General Studies	3	0	1-AEL;1-CLE;1-EH	0		0		0	
	Associate of Arts/Liberal Studies									
2007	Environmental Humanities	1	1		0	1	0			
	Environmental Writing	4	3		1		2		1	
	Bachelor of General Studies	1	0	1-WCARE	0		0			
	Associate of Arts/Liberal Studies	2	2		0		1		1	
2008	Environmental Humanities	0								
	Environmental Writing	1	1			1-WILD			1	
	Bachelor of General Studies	2	2				1		1	
	Associate of Arts/Liberal Studies	0								
2009	Environmental Humanities	0								1-AT
	Environmental Writing	1	1				0		1	1-C. WILD
	Bachelor of General Studies	0								1-UND
	Associate of Arts/Liberal Studies	0								1-C. WILD
2010	Environmental Humanities	0	0							
	Environmental Writing	2	2							
	Bachelor of General Studies	0	0							
	Associate of Arts/Liberal Studies	1	1							

GRADUATION RATES

Graduation rates are based on the total entering cohort for each fall semester separated by incoming and transfer students. Total by center is also included.
 These graduation rates can include students who may have transferred into the specific major while attending the college.

FOUR YEAR RATES

Fall Headcount Incoming Class	189				178				182				185			
	2003				2004				2005				2006			
	INCOMING (166)		TRANSFERS (23)		INCOMING (150)		TRANSFERS (28)		INCOMING (151)		TRANSFERS (31)		INCOMING (152)		TRANSFERS (33)	
	#	% of Cohort	#	% of Cohort	#	% of Cohort	#	% of Cohort	#	% of Cohort	#	% of Cohort	#	% of Cohort	#	% of Cohort
Environmental Humanities - BA					1	1%									1	3%
Environmental Writing - BA	4	2%			3	2%	1	4%	2	1%	1	3%	1	1%	1	3%
General Studies - BGS					1	1%	1	4%								
Liberal Studies - AA																
TOTALS BY CENTER	4	2%			5	3%	2	7%	2	1%	1	3%	1	1%	2	6%

SIX YEAR RATES

Instead of reporting all the data again, I am reporting only the additional graduates that fall into the six year rate. If no data is reported, then the six year rate is the same as the four year rate.

Fall Headcount Incoming Class	189				178				182			
	2003				2004				2005			
	INCOMING (166)		TRANSFER (23)		INCOMING (150)		TRANSFER (28)		INCOMING (151)		TRANSFER (31)	
	#	% of Cohort	#	% of Cohort	#	% of Cohort	#	% of Cohort	#	% of Cohort	#	% of Cohort
Environmental Humanities - BA	1	1%							1	3%		
Environmental Writing - BA	5	3%										
General Studies - BGS												
Liberal Studies - AA												

Center for Environmental and Experiential Education

Associated Curricula

Adventure Education Leadership (BS)

Adventure Therapy (BS)

Environmental Education (BS)

Wildlife Care and Education (BS)

Captive Wildlife Care and Education (BS)

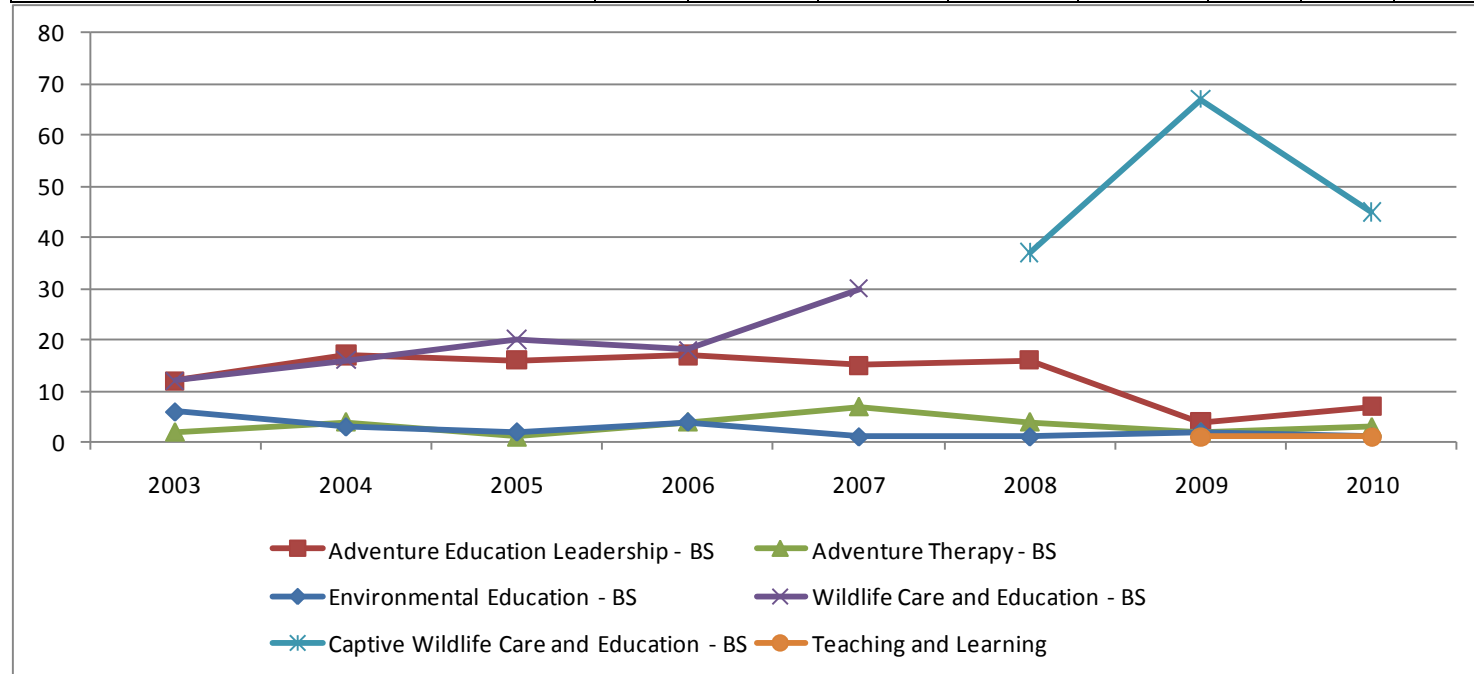
Teaching and Learning (BS)

Enrollment

The data and charts below show enrollments in majors based on fall entering cohorts. A cohort is comprised of all students entering Unity College for the first time in the fall semester of an academic year.

Headcount

Fall Headcount Incoming Class	189	178	182	185	203	194	198	179
	2003	2004	2005	2006	2007	2008	2009	2010
Adventure Education Leadership - BS	12	17	16	17	15	16	4	7
Adventure Therapy – BS	2	4	1	4	7	4	2	3
Environmental Education - BS	6	3	2	4	1	1	2	1
Wildlife Care and Education – BS	12	16	20	18	30			
Captive Wildlife Care and Education - BS						37	67	45
Teaching and Learning - BS							1	1



Percentage Enrolled of Total Headcount

% of Cohort	2003	2004	2005	2006	2007	2008	2009	2010
Adventure Education Leadership – BS	6%	10%	9%	9%	7%	8%	2%	4%
Adventure Therapy – BS	1%	2%	1%	2%	3%	2%	1%	2%
Environmental Education - BS	3%	2%	1%	2%	0%	1%	1%	1%
Wildlife Care and Education – BS	6%	9%	11%	10%	15%			
Captive Wildlife Care and Education - BS						19%	34%	25%
Teaching and Learning - BS							1%	1%

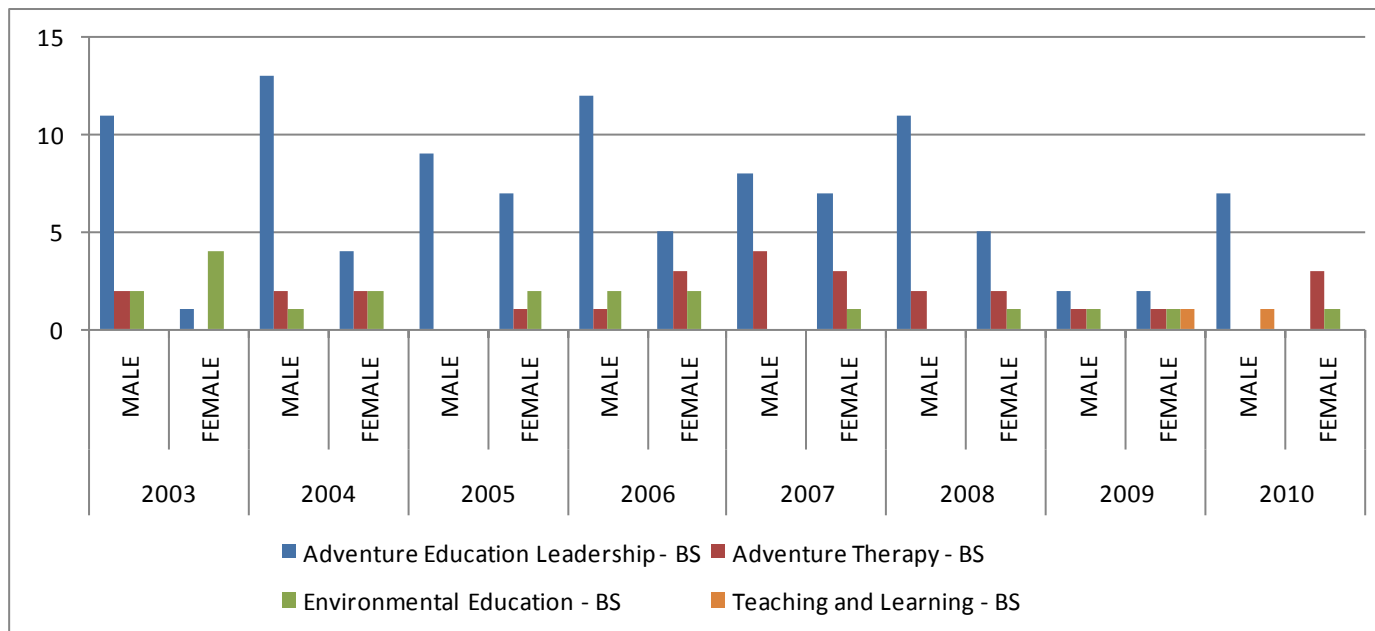
Students Enrolled in the Student Academic Growth Experience

SAGE Enrollment	2003	2004	2005	2006	2007	2008	2009	2010
Adventure Education Leadership – BS	5		3	3	2	2		1
Adventure Therapy - BS					1		1	
Environmental Education – BS								
Captive Wildlife Care and Education - BS	1	2	1		1		3	2
Teaching and Learning - BS								

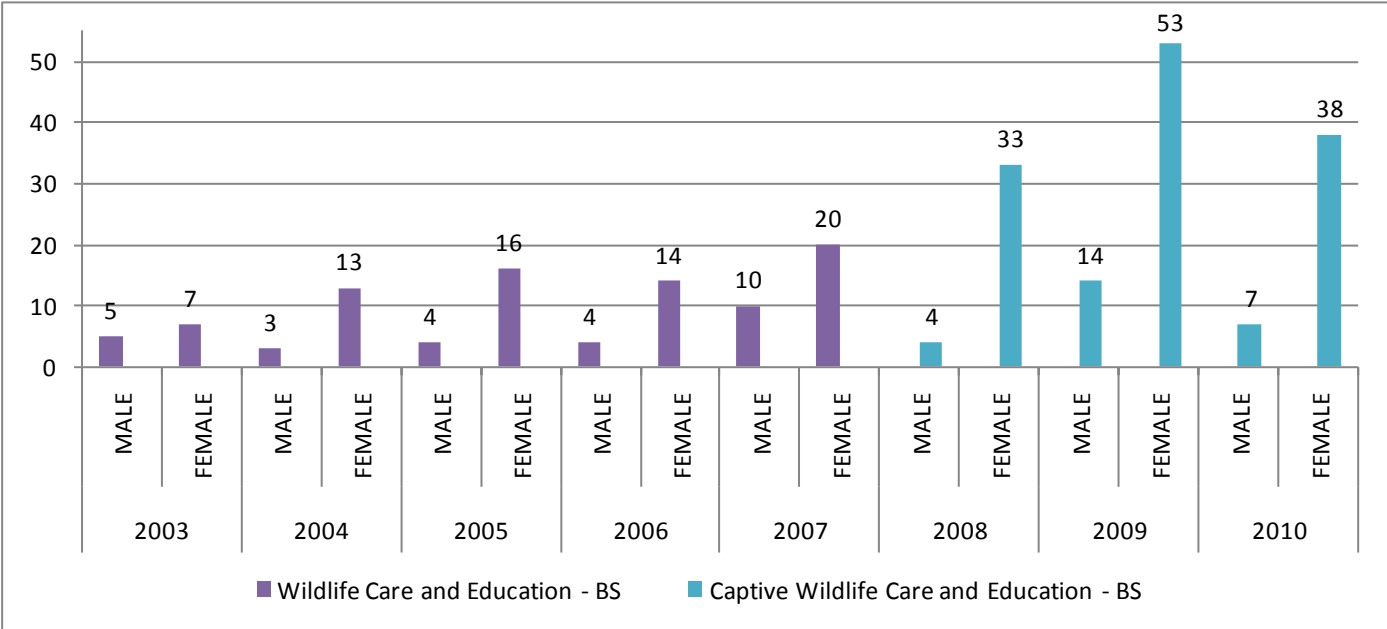
Gender

There are two charts for this center. I have done a separate chart for Wildlife Care and Education - Captive Wildlife Care and Education. This is a program that exploded in enrollment in fall 2009.

	2003		2004		2005		2006		2007		2008		2009		2010	
	M	F	M	F	M	F	M	F	M	F	M	F	M	F	M	F
Adventure Education Leadership - BS	11	1	13	4	9	7	12	5	8	7	11	5	2	2	7	0
Adventure Therapy - BS	2	0	2	2	0	1	1	3	4	3	2	2	1	1	0	3
Environmental Education - BS	2	4	1	2	0	2	2	2	0	1	0	1	1	1	0	1
Wildlife Care and Education - BS	5	7	3	13	4	16	4	14	10	20						
Captive Wildlife Care and Education - BS											4	33	14	53	7	38
Teaching and Learning - BS													0	1	1	0

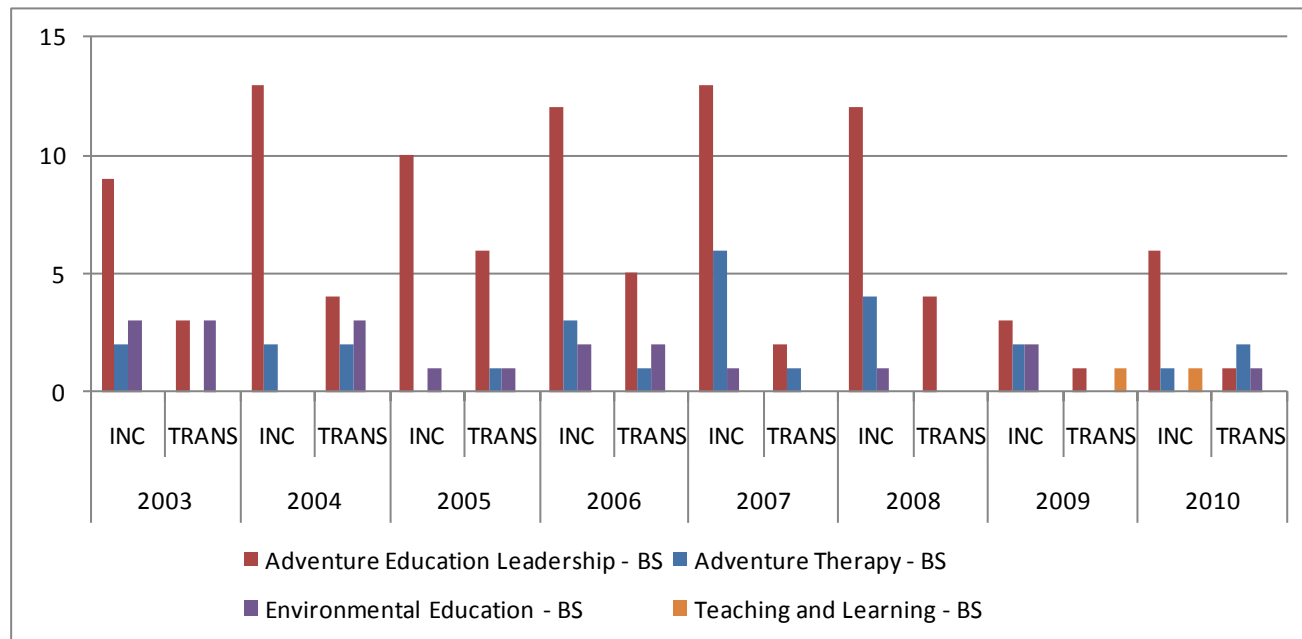


GENDER CONTINUED

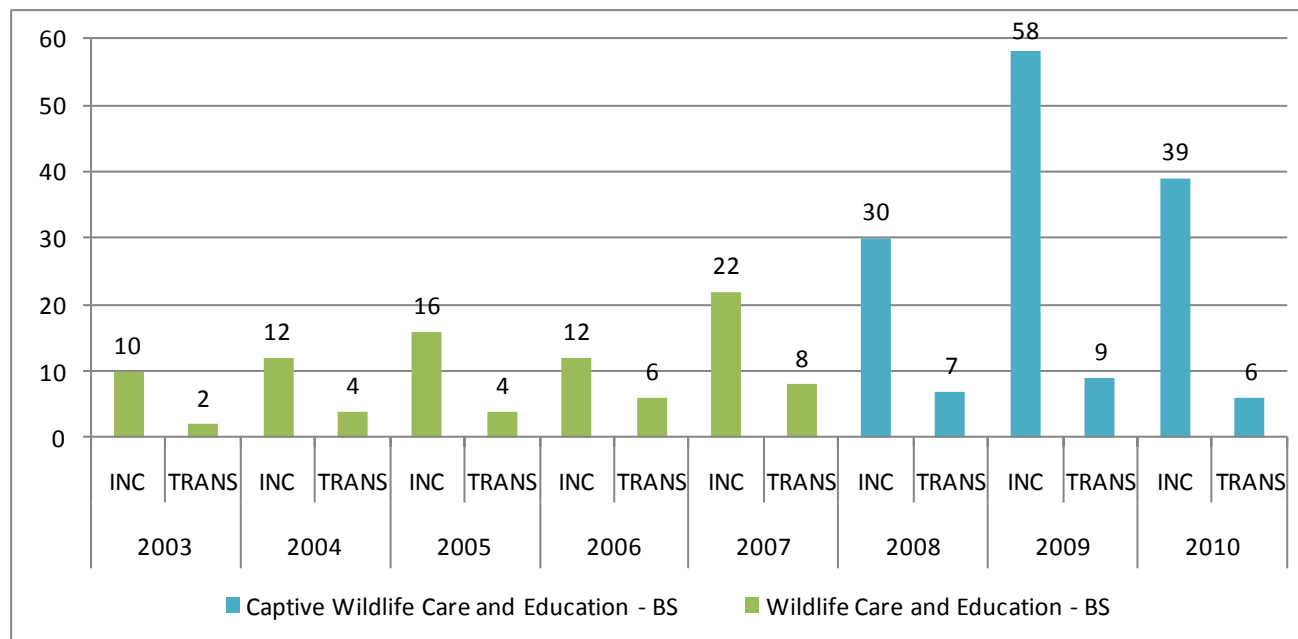


Incoming/Transfer

	2003		2004		2005		2006		2007		2008		2009		2010	
	INC	TRANS	INC	TRANS	INC	TRANS	INC	TRANS	INC	TRANS	INC	TRANS	INC	TRANS	INC	TRANS
Adventure Education Leadership - BS	9	3	13	4	10	6	12	5	13	2	12	4	3	1	6	1
Adventure Therapy - BS	2	0	2	2	0	1	3	1	6	1	4	0	2	0	1	2
Environmental Education - BS	3	3	0	3	1	1	2	2	1	0	1	0	2	0	0	1
Wildlife Care and Education - BS	10	2	12	4	16	4	12	6	22	8						
Captive Wildlife Care and Education - BS											30	7	58	9	39	6
Teaching and Learning - BS													0	1	1	0

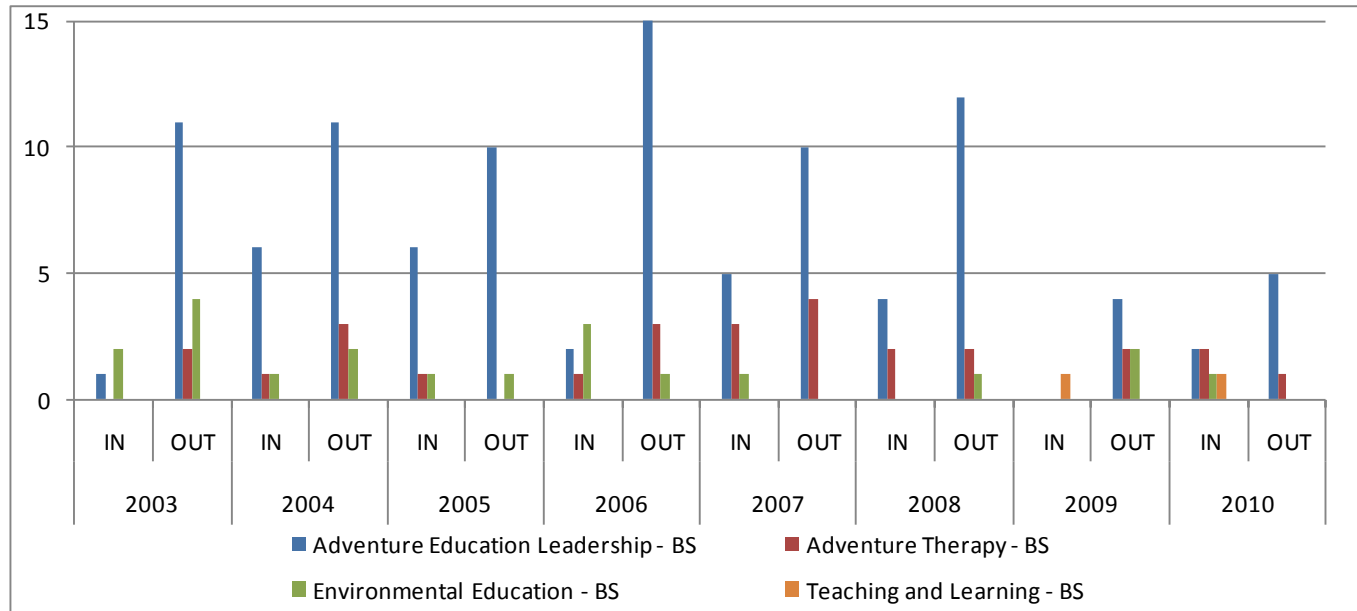


Incoming/Transfer Continued

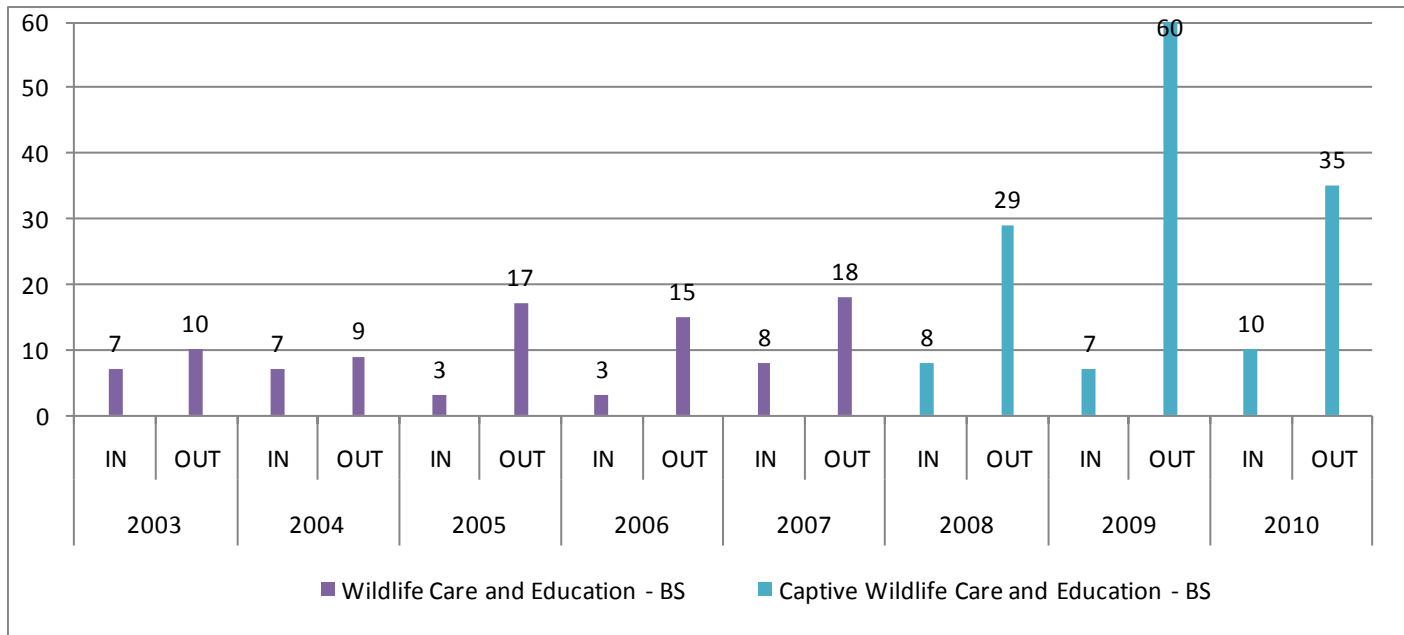


IN STATE/OUT OF STATE

	2003		2004		2005		2006		2007		2008		2009		2010	
	IN	OUT	IN	OUT	IN	OUT	IN	OUT	IN	OUT	IN	OUT	IN	OUT	IN	OUT
Adventure Education Leadership - BS	1	11	6	11	6	10	2	15	5	10	4	12	0	4	2	5
Adventure Therapy - BS	0	2	1	3	1	0	1	3	3	4	2	2	0	2	2	1
Environmental Education - BS	2	4	1	2	1	1	3	1	1	0	0	1	0	2	1	0
Wildlife Care and Education - BS	7	10	7	9	3	17	3	15	8	18						
Captive Wildlife Care and Education - BS											8	29	7	60	10	35
Teaching and Learning - BS													1	0	1	0



IN STATE/OUT OF STATE CONTINUED



Average HS GPA College wide for Cohorts

	2003		2004		2005		2006		2007		2008		2009		2010	
	#Resp	Avg	# Resp	Avg	# Resp	Avg	# Resp	Avg	# Resp	Avg	# Resp	Avg	# Resp	Avg	# Resp	Avg
AVG HS GPA	92	2.95	88	2.93	133	2.92	139	2.94	170	3.02	177	3.13	179	3.16	165	3.24
AVG SAT	138	997	134	1002	124	987	107	965	59	962	130	1490	134	1502	118	1530
AVG ACT	14	22	11	24	3	14	16	20	18	23	21	22	28	22	27	24
Cohort Population	189		178		182		185		203		194		198		179	

Average High School Grade Point Average for Responses

	2003		2004		2005		2006		2007		2008		2009		2010	
	# Resp	Avg	# Resp	Avg	# Resp	Avg	# Resp	Avg	# Resp	Avg	# Resp	Avg	#Resp	Avg	#Resp	Avg
Adventure Education Leadership - BS	7	3.11	9	2.92	14	2.98	10	3.13	11	2.87	14	3.10	5	2.31	7	2.82
Adventure Therapy - BS			1	2.10	1	1.93	3	3.39	6	3.03	3	3.28	1	2.20	2	3.73
Environmental Education - BS	1	2.28	3	2.63	2	3.23	2	2.38			1	3.60	1	3.00		
Captive Wildlife Care and Education - BS	8	3.29	5	3.19	14	2.87	15	3.08	23	3.04	31	3.06	67	3.07	41	3.38
Teaching and Learning - BS															1	3.55

Standardized test scores (SAT, ACT) are not required for admission, but should be submitted if they are available. In light of that, I am also reporting the number of responses, which is the number of student who submitted scores.

Average SAT Comprehensive Scores for Responses

The SAT has under gone some changes in the past few years. Students who took the SAT before March 2005 received two scores (verbal and math) both on a scale from 200-800. So the total score available was 1600. After March of 2005 students received three sections (critical reading, math and writing), each of which are worth up to 800 points. The highest score available would be a 2400. In this factbook we are reporting the Composite score which is all three parts of the SAT summed. Tread lightly - the data may be a little skewed due to the fact that some students who entered in a given cohort since 2005 may have taken either the newer exams or the older ones. There is no way to tell which students may have taken the new or old SAT format.

	2003		2004		2005		2006		2007		2008		2009		2010	
	# Resp	Avg	# Resp	Avg	# Resp	Avg	# Resp	Avg	# Resp	Avg	# Resp	Avg	# Resp	Avg	#Resp	Avg
Adventure Education Leadership - BS	11	936	14	1047	5	1016	9	940	4	1035	10	1570	3	1693	7	1578
Adventure Therapy - BS					1	1050	3	1063	2	760	2	1815			3	1386
Environmental Education - BS	4	1010			1	860	1	950			1	1470	1	1580	1	1060
Captive Wildlife Care and Education - BS	11	1023	14	1057	18	1032	12	936	10	906	10	1489	47	1569	31	1595
Teaching and Learning – BS															1	1320

Average ACT Comprehensive Scores for Responses

The ACT has four sections (English, math, reading comprehension and science, with an optional essay section). A perfect score is 36. Again, we are reporting the Composite score average for the number of responses.

	2003		2004		2005		2006		2007		2008		2009		2010	
	# Resp	Avg	# Resp	Avg	# Resp	Avg	# Resp	Avg	# Resp	Avg	# Resp	Avg	# Resp	Avg	#Resp	Avg
Adventure Education Leadership - BS			1	21							2	21	1	13		
Adventure Therapy - BS															2	20
Environmental Education - BS	1	19														
Captive Wildlife Care and Education - BS	2	27	3	29			2	24	2	19	6	21	12	23	8	25
Teaching and Learning - BS																

RETENTION

The table below gives the retention to the 2nd semester and retention to the 3rd semester by individual majors. The students no longer in the cohort are separated by “Left College” and “Moved to another Major”. Once a student moves to a different major, they do not become part of the original cohort. Once they move they are not tracked for retention. A cohort, once established, remains the same. However, the information on the status of students in the original cohort can be determined by the table. This will allow you to look for patterns of program movement.

Most retention initiatives and retention studies concentrate on the 1st to 2nd year retention. Nationally, this is where students choose to stay at an institution or move on.

AY	MAJOR	COHORT	RETENTION TO 2ND SEMESTER				RETENTION TO 3RD SEMESTER			
			RETURNED FROM ORIGINAL COHORT	MOVED TO ANOTHER MAJOR	LEFT COLLEGE	ENTERED FROM ANOTHER MAJOR	RETURNED FROM ORIGINAL COHORT	MOVED TO ANOTHER MAJOR	LEFT COLLEGE	ENTERED FROM ANOTHER MAJOR
2003	Adventure Education Leadership	12	11		1	1-CLE	9		2	1-AA/LS; 1-UND
	Adventure Therapy	2	0	1-CLE;1-UND		1-EED	0		0	1-AS/ES
	Environmental Education	6	3	1-AT;1-PRE; 1-WBIO			2	1-ES	0	1-PRE;1-WBIO
	Wildlife Care and Education	12	11		1	3-WILD;2-EPOL;2-EW;1-ECOL;1-UND;1-AT	8	1-BGS;1-WCON	1	

AY	MAJOR	COHORT	RETENTION TO 2ND SEMESTER				RETENTION TO 3RD SEMESTER			
			RETURNED FROM ORIGINAL COHORT	MOVED TO ANOTHER MAJOR	LEFT COLLEGE	ENTERED FROM ANOTHER MAJOR	RETURNED FROM ORIGINAL COHORT	MOVED TO ANOTHER MAJOR	LEFT COLLEGE	ENTERED FROM ANOTHER MAJOR
2004	Adventure Education Leadership	17	16	1-EED	0		15		1	1-CLE;1-UND
	Adventure Therapy	4	4		0		3		1	
	Environmental Education	3	3		0	1-AEL	3		0	1-PRE
	Wildlife Care and Education	16	15	1-ES	0	2-UND	13	1-WILD	1	1-WILD
2005	Adventure Education Leadership	16	15	1-CLE	0		13		2	
	Adventure Therapy	1	1		0	1-PRE;1-WCARE	0	1-EED	0	1-LH
	Environmental Education	2	2		0	1-WCARE	1		1	1-AT;1-PRE
	Wildlife Care and Education	20	17	1-AT;1-EBIO;1-EED	0	1-WCON	10	3-WILD	4	
2006	Adventure Education Leadership	17	13	1-ECOL	3	2-EED;1-BGS	12	1-AT	0	
	Adventure Therapy	4	3	1-CLE	0		3		0	1-AEL
	Environmental Education	4	2	2-AEL	0	1-EPOL	1		1	
	Wildlife Care and Education	18	11	1-ECOL;1-EANAL;2-WCON	3	1-EW	7	1-WILD	3	

AY	MAJOR	COHORT	RETENTION TO 2ND SEMESTER				RETENTIN TO 3RD SEMESTER			
			RETURNED FROM ORIGINAL COHORT	MOVED TO ANOTHER MAJOR	LEFT COLLEGE	ENTERED FROM ANOTHER MAJOR	RETURNED FROM ORIGINAL COHORT	MOVED TO ANOTHER MAJOR	LEFT COLLEGE	ENTERED FROM ANOTHER MAJOR
2007	Adventure Education Leadership	15	13	1-EED	1	1-AT; 2-UND	6	1-EED	6	1-UND
	Adventure Therapy	7	6	1-AEL	0	1-ES;1-UND	5		1	1-UND
	Environmental Education	1	0		1	1-AEL	0			1-AEL
	Wildlife Care and Education	30	23	3-WCON;1-CLE;1-WILD	2	1-BGS;1-WCON	14	5-CWILD;1-CLE	3	
	Captive Wildlife Care and Education									1-BGS
2008	Adventure Education Leadership	16	12	1-AT;1-PRE;1-EED	1	1-UND	11	1-EED		
	Adventure Therapy	4	3		1	1-AEL	3			
	Environmental Education	1	0	1-WILD		1-AEL	0			
	Captive Wildlife Care and Education	37	32	1-MBIO	4	1-MBIO;1-WILD;2-UND;2-WBIO	27	1-ECO;1MBIO	3	

AY	MAJOR	COHORT	RETENTION TO 2ND SEMESTER				RETENTION TO 3RD SEMESTER			
			RETURNED FROM ORIGINAL COHORT	MOVED TO ANOTHER MAJOR	LEFT COLLEGE	ENTERED FROM ANOTHER MAJOR	RETURNED FROM ORIGINAL COHORT	MOVED TO ANOTHER MAJOR	LEFT COLLEGE	ENTERED FROM ANOTHER MAJOR
2009	Adventure Education Leadership	4	4				2		2	1-UND
	Adventure Therapy	2	2				1	1-EHUM		1-MBIO
	Environmental Education	2	1		1		1			
	Captive Wildlife Care and Education	67	61	1 WILD; 1-WCON; 2-CLE; 1-EPOL; 1-WBIO			45	2-CLE;1-AGRI;1-EWRIT;3-WBIO;4-WCONS;5-WILD		1-UND
	Teaching and Learning	1	1				0	1-EED		1-EED
2010	Adventure Education Leadership	7	6	1-AT	1	2-AEL				
	Adventure Therapy	3	3			1-AEL				
	Environmental Education	1	1							
	Captive Wildlife Care and Education	45	31	1-PARK;3-WCON;3-WILD	7	1-UND				
	Teaching and Learning	1	1							

GRADUATION RATES

Graduation rates are based on the total entering cohort for each fall semester separated by incoming and transfer students. Total by center is also included. These graduation rates can include students who may have transferred into the specific major while attending the college.

FOUR YEAR RATES

Fall Headcount Incoming Class	189				178				182				185			
	2003				2004				2005				2006			
	INCOMING (166)		TRANSFERS (23)		INCOMING (150)		TRANSFERS (28)		INCOMING (151)		TRANSFERS (31)		INCOMING (152)		TRANSFERS (33)	
	#	% of Cohort	#	% of Cohort	#	% of Cohort	#	% of Cohort	#	% of Cohort	#	% of Cohort	#	% of Cohort	#	% of Cohort
Adventure Education Leadership - BS	4	2%	2	9%	5	3%			4	3%	1	3%	9	6%	1	3%
Adventure Therapy - BS	2	1%			1	1%	2	7%	1	1%	1	3%			2	6%
Environmental Education - BS	1	1%	1	4%	1	1%	3	11%	1	1%	2	6%				
Wildlife Care and Education - BS	3	2%	2	9%	4	3%			4	3%						
Captive Wildlife Care and Education - BS													4	3%	1	3%
Teaching and Learning - BS																
TOTALS BY CENTER	10	6%	5	22%	11	7%	5	18%	10	7%	4	13%	13	9%	4	12%

SIX YEAR RATES

Instead of reporting all the data again, I am reporting only the additional graduates that fall into the six year rate. If no data is reported, then the six year rate is the same as the four year rate.

Fall Headcount Incoming Class	189				178				182			
	2003				2004				2005			
	INCOMING (166)		TRANSFER (23)		INCOMING (150)		TRANSFER (28)		INCOMING (151)		TRANSFER (31)	
	#	% of Cohort	#	% of Cohort	#	% of Cohort	#	% of Cohort	#	% of Cohort	#	% of Cohort
Adventure Education Leadership - BS					6	4%					2	6%
Adventure Therapy - BS									2	1%		
Environmental Education - BS	2	1%										
Wildlife Care and Education - BS												
Captive Wildlife Care and Education - BS												
Teaching and Learning									1	1%		

Center for Natural Resource Management and Protection

Associated Curricula

Aquaculture and Fisheries (BS)

Conservation Law Enforcement (BS)

Forestry (BS)

Parks, Recreation and Ecotourism (BS)

Wildlife (BS)

Wildlife Biology (BS)

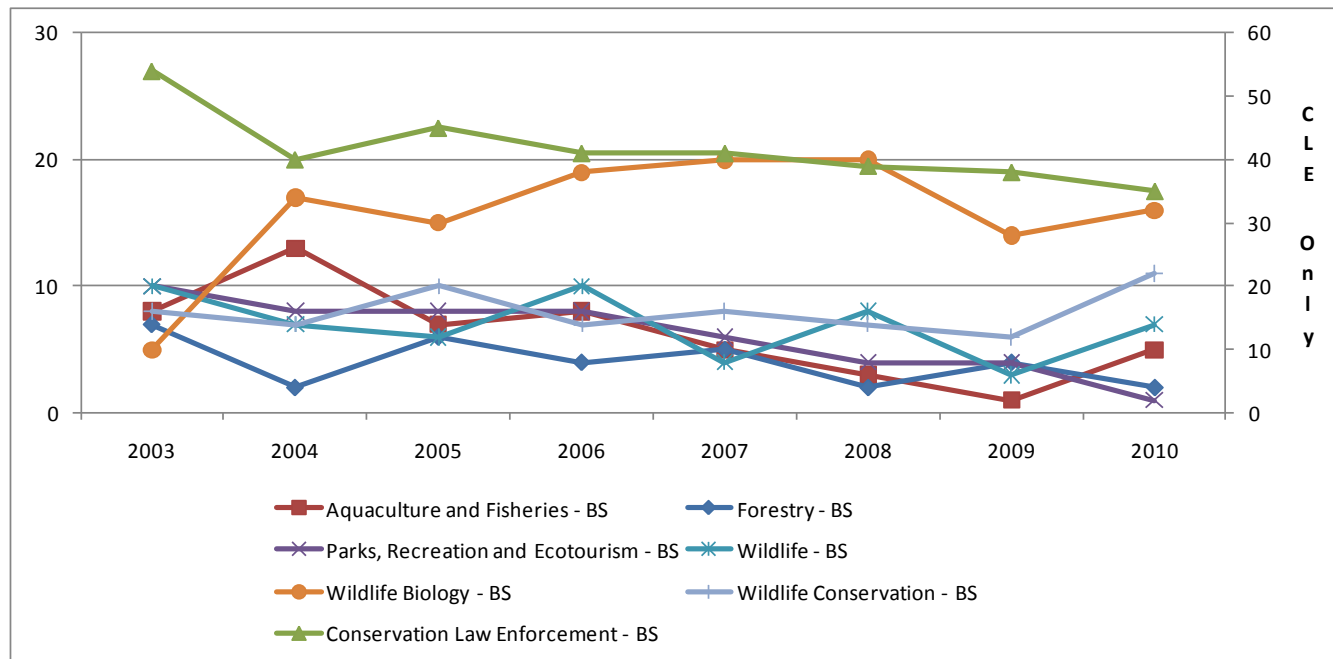
Wildlife Conservation (BS)

Enrollment

The data and charts below show enrollments in majors based on fall entering cohorts. A cohort is comprised of all students entering Unity College for the first time in the fall semester of an academic year. In the chart below I have used a secondary y-axis for the Conservation Law Enforcement major due to the disparity of the enrollment data.

Headcount

Fall Headcount Incoming Class	189	178	182	185	203	194	198	179
	2003	2004	2005	2006	2007	2008	2009	2010
Aquaculture and Fisheries - BS	8	13	7	8	5	3	1	5
Conservation Law Enforcement - BS	54	40	45	41	41	39	38	35
Forestry – BS	7	2	6	4	5	2	4	2
Parks, Recreation and Ecotourism - BS	10	8	8	8	6	4	4	1
Wildlife - BS	10	7	6	10	4	8	3	7
Wildlife Biology - BS	5	17	15	19	20	20	14	16
Wildlife Conservation - BS	8	7	10	7	8	7	6	11



Percentage Enrolled of Total Headcount

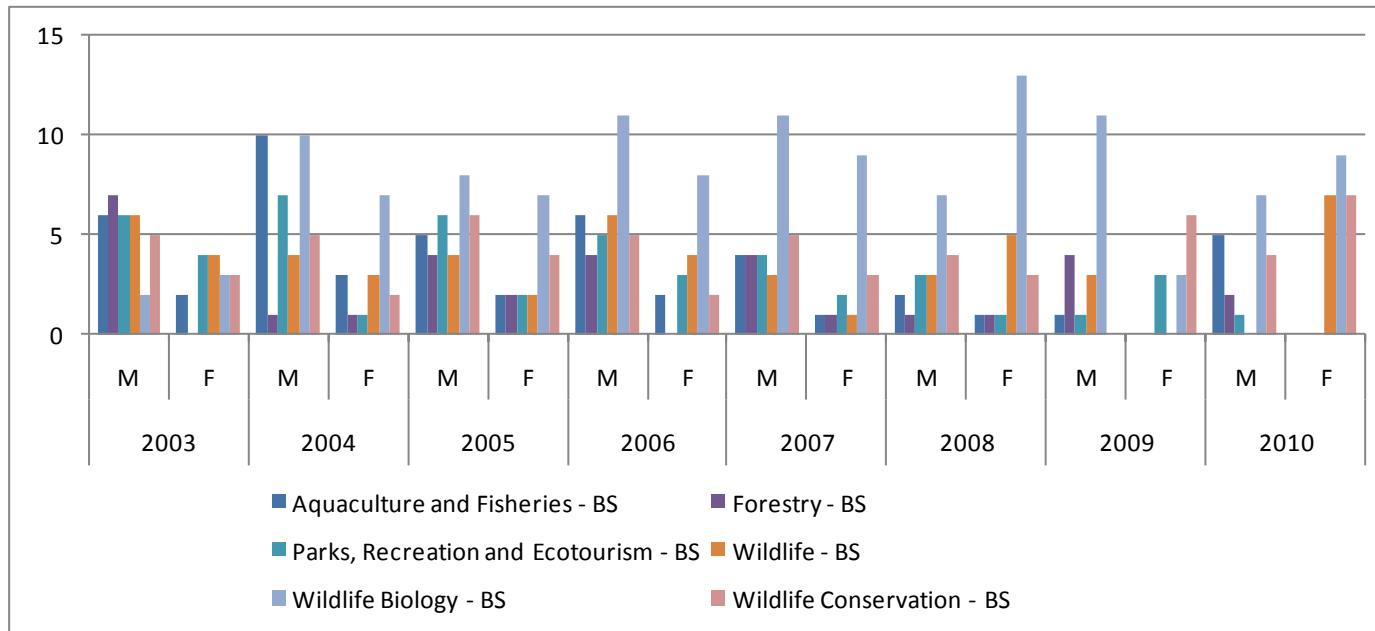
% of Cohort	2003	2004	2005	2006	2007	2008	2009	2010
Aquaculture and Fisheries – BS	4%	7%	4%	4%	2%	2%	1%	3%
Conservation Law Enforcement - BS	29%	22%	25%	22%	20%	20%	20%	18%
Forestry – BS	4%	1%	3%	2%	2%	1%	2%	1%
Parks, Recreation and Ecotourism - BS	5%	4%	4%	4%	3%	2%	2%	1%
Wildlife – BS	5%	4%	3%	5%	2%	4%	2%	4%
Wildlife Biology – BS	3%	10%	8%	10%	10%	10%	7%	8%
Wildlife Conservation – BS	4%	4%	5%	4%	4%	4%	3%	6%

Students Enrolled in the Student Academic Growth Experience

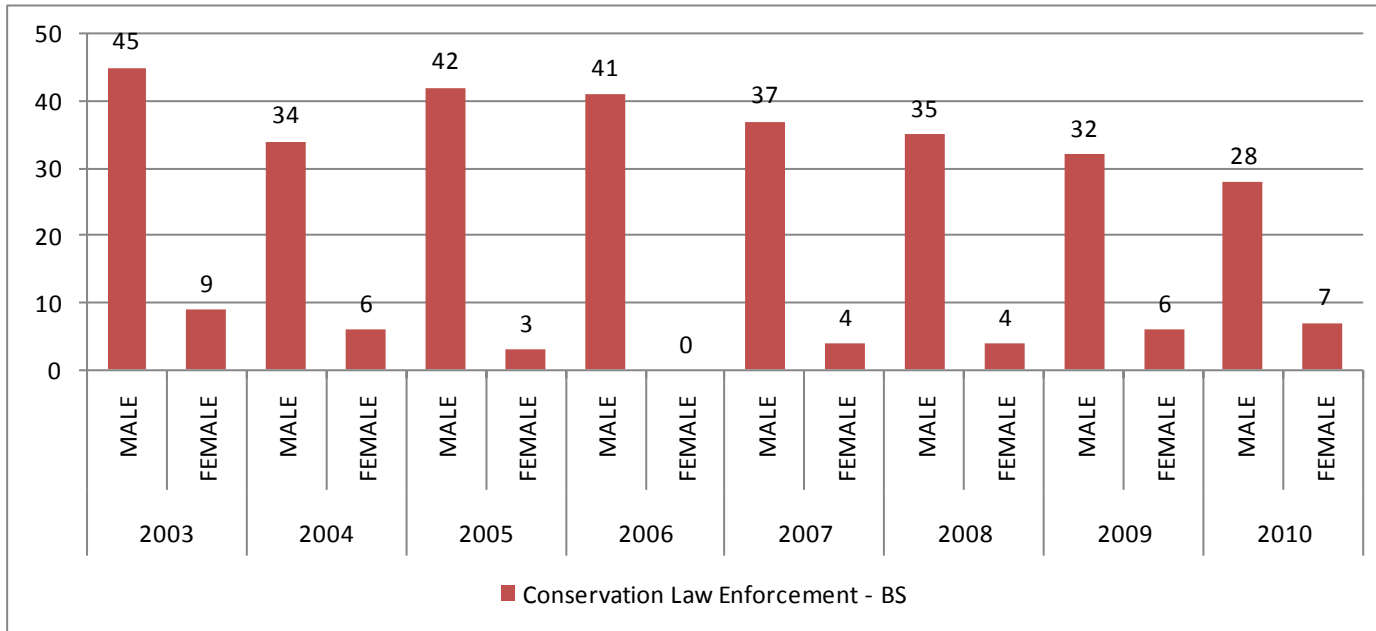
SAGE Enrollment	2003	2004	2005	2006	2007	2008	2009	2010
Aquaculture and Fisheries - BS		1	1	1	2			1
Conservation Law Enforcement - BS	9	6	3	3	8	4	5	1
Forestry - BS	2	1	3	2				
Parks, Recreation and Ecotourism - BS	4	1					1	
Wildlife - BS	1	1	1	2		1		1
Wildlife Biology - BS		1	1	3	1		1	
Wildlife Conservation - BS	1	1	1		1	2		

Gender

	2003		2004		2005		2006		2007		2008		2009		2010	
	M	F	M	F	M	F	M	F	M	F	M	F	M	F	M	F
Aquaculture and Fisheries - BS	6	2	10	3	5	2	6	2	4	1	2	1	1	0	5	0
Conservation Law Enforcement - BS	45	9	34	6	42	3	41	0	37	4	35	4	32	6	28	7
Forestry - BS	7	0	1	1	4	2	4	0	4	1	1	1	4	0	2	0
Parks, Recreation and Ecotourism - BS	6	4	7	1	6	2	5	3	4	2	3	1	1	3	1	0
Wildlife - BS	6	4	4	3	4	2	6	4	3	1	3	5	3	0	0	7
Wildlife Biology - BS	2	3	10	7	8	7	11	8	11	9	7	13	11	3	7	9
Wildlife Conservation - BS	5	3	5	2	6	4	5	2	5	3	4	3	0	6	4	7

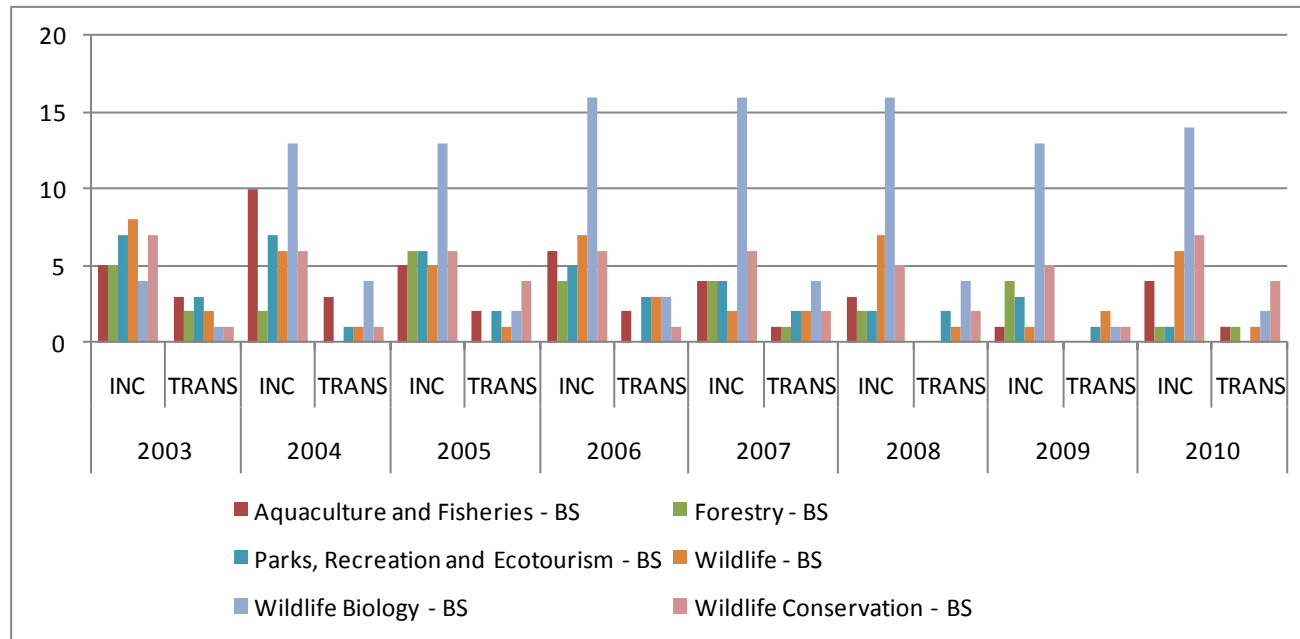


Gender Continued

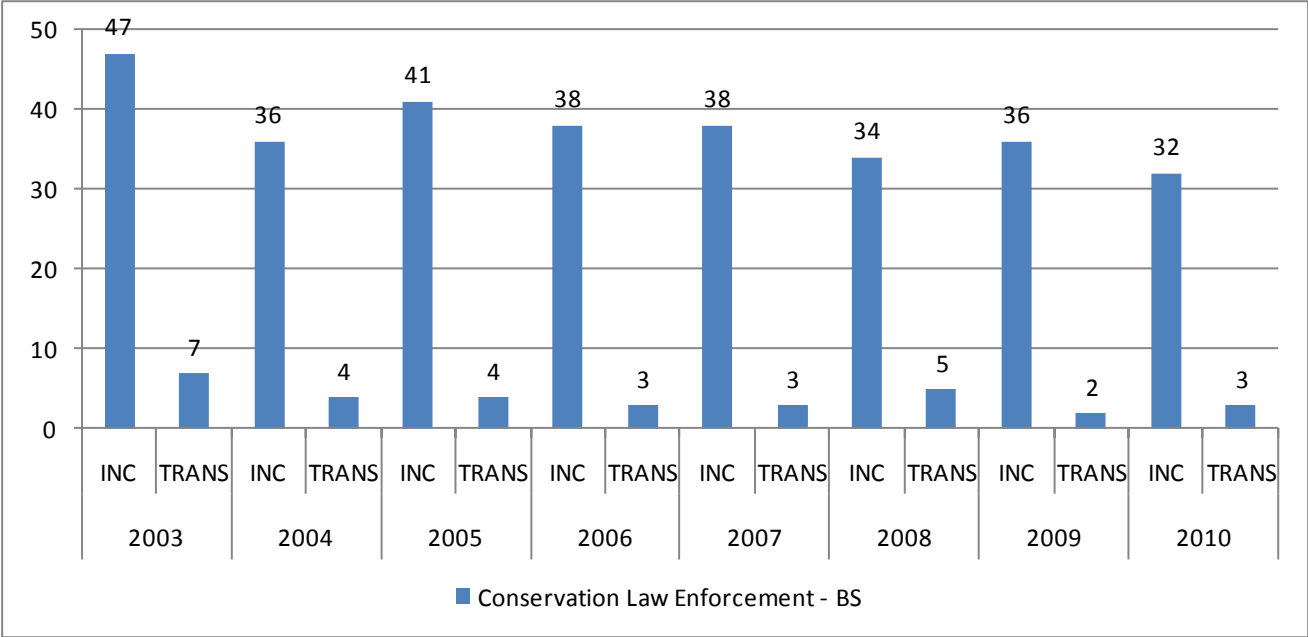


Incoming/Transfer

	2003		2004		2005		2006		2007		2008		2009		2010	
	INC	TRANS	INC	TRANS	INC	TRANS	INC	TRANS	INC	TRANS	INC	TRANS	INC	TRANS	INC	TRANS
Aquaculture and Fisheries - BS	5	3	10	3	5	2	6	2	4	1	3	0	1	0	4	1
Conservation Law Enforcement - BS	47	7	36	4	41	4	38	3	38	3	34	5	36	2	32	3
Forestry - BS	5	2	2	0	6	0	4	0	4	1	2	0	4	0	1	1
Parks, Recreation and Ecotourism - BS	7	3	7	1	6	2	5	3	4	2	2	2	3	1	1	0
Wildlife - BS	8	2	6	1	5	1	7	3	2	2	7	1	1	2	6	1
Wildlife Biology - BS	4	1	13	4	13	2	16	3	16	4	16	4	13	1	14	2
Wildlife Conservation - BS	7	1	6	1	6	4	6	1	6	2	5	2	5	1	7	4



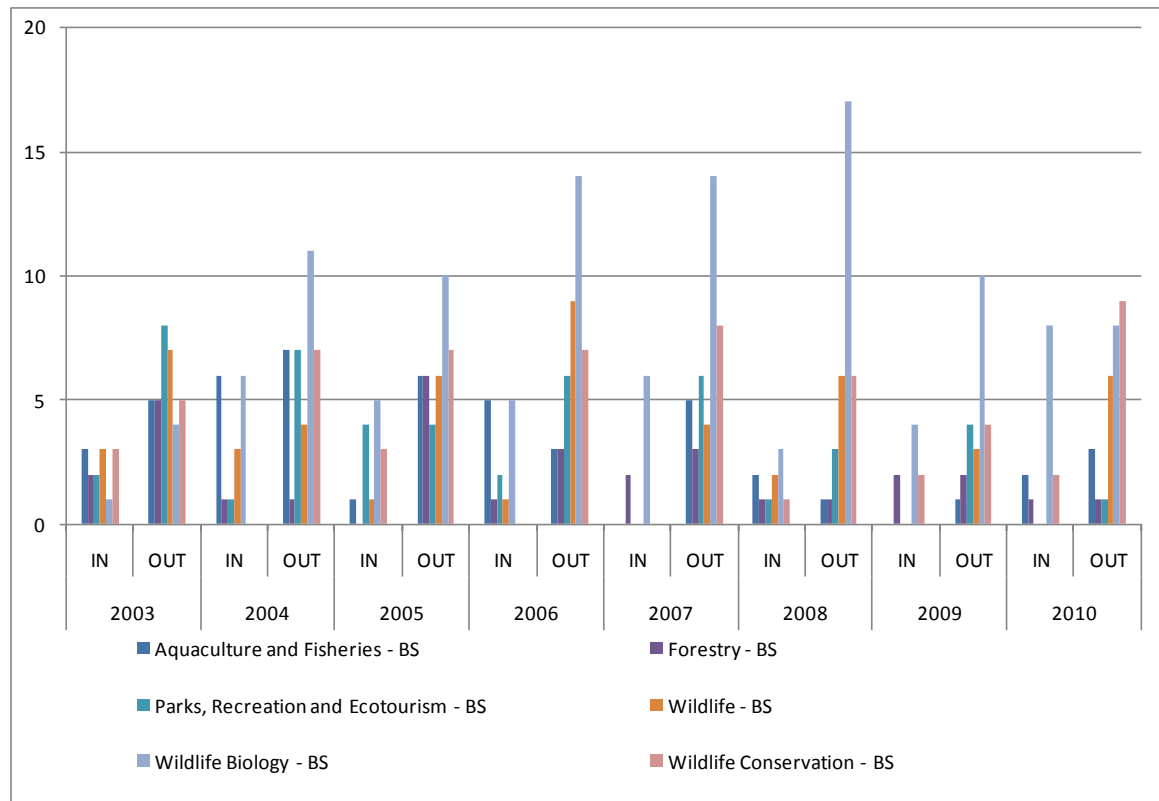
Incoming/Transfer Continued



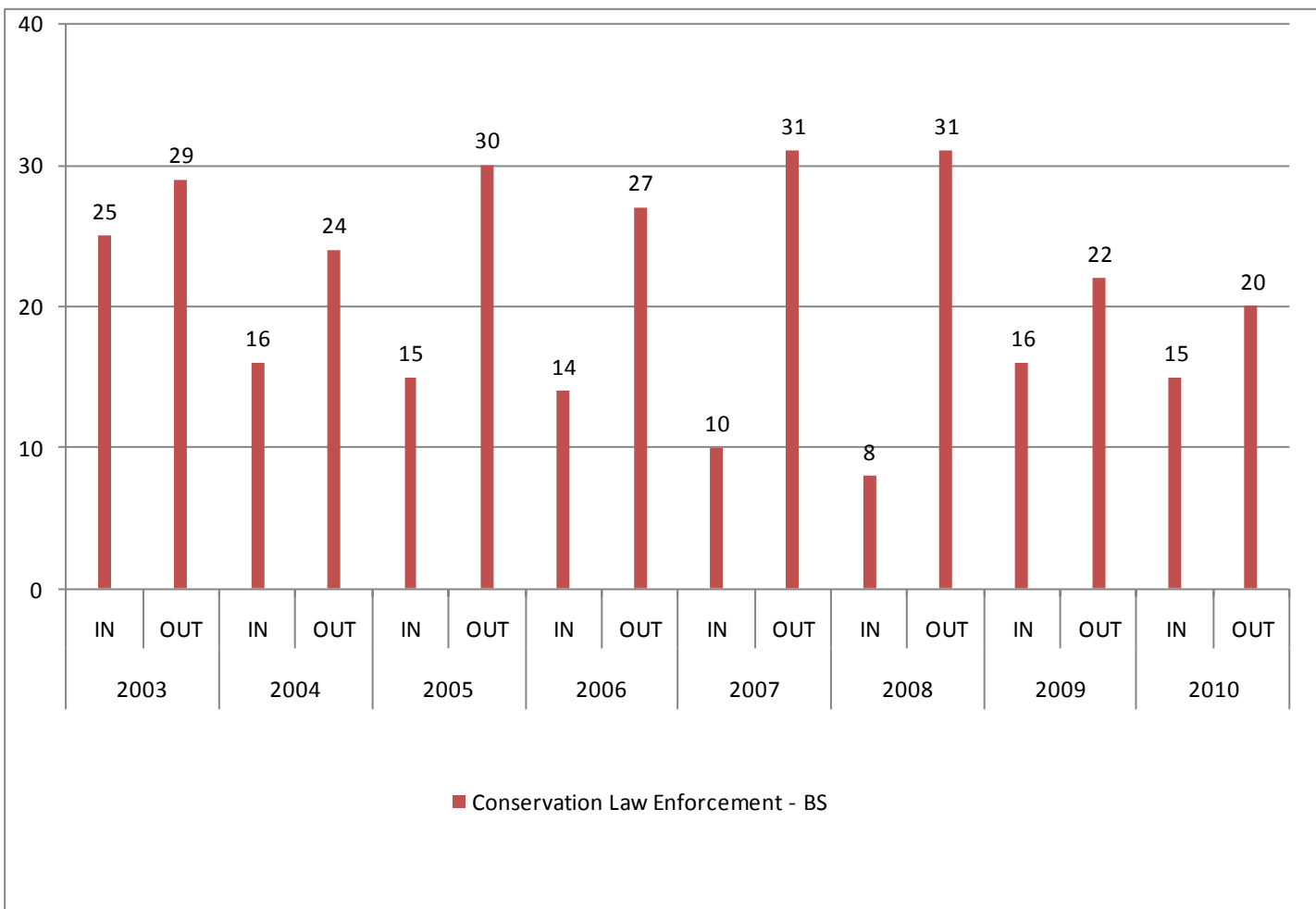
IN STATE/OUT OF STATE

Reflects the cohort as either from Maine or from Out of State.

	2003		2004		2005		2006		2007		2008		2009		2010	
	IN	OUT	IN	OUT	IN	OUT	IN	OUT	IN	OUT	IN	OUT	IN	OUT	IN	OUT
Aquaculture and Fisheries - BS	3	5	6	7	1	6	5	3	0	5	2	1	0	1	2	3
Conservation Law Enforcement - BS	25	29	16	24	15	30	14	27	10	31	8	31	16	22	15	20
Forestry - BS	2	5	1	1	0	6	1	3	2	3	1	1	2	2	1	1
Parks, Recreation and Ecotourism - BS	2	8	1	7	4	4	2	6	0	6	1	3	0	4	0	1
Wildlife - BS	3	7	3	4	1	6	1	9	0	4	2	6	0	3	0	6
Wildlife Biology - BS	1	4	6	11	5	10	5	14	6	14	3	17	4	10	8	8
Wildlife Conservation - BS	3	5	0	7	3	7	0	7	0	8	1	6	2	4	2	9



IN STATE/OUT OF STATE CONTINUED



Average HS GPA College wide for Cohorts

	2003		2004		2005		2006		2007		2008		2009		2010	
	#Resp	Avg	# Resp	Avg	# Resp	Avg	# Resp	Avg	# Resp	Avg	# Resp	Avg	# Resp	Avg	# Resp	Avg
AVG HS GPA	92	2.95	88	2.93	133	2.92	139	2.94	170	3.02	177	3.13	179	3.16	165	3.24
AVG SAT	138	997	134	1002	124	987	107	965	59	962	130	1490	134	1502	118	1530
AVG ACT	14	22	11	24	3	14	16	20	18	23	21	22	28	22	27	24
Cohort Population	189		178		182		185		203		194		198		179	

Average High School Grade Point Average for Responses

	2003		2004		2005		2006		2007		2008		2009		2010	
	# Resp	Avg	# Resp	Avg	# Resp	Avg	# Resp	Avg	# Resp	Avg	# Resp	Avg	#Resp	Avg	#Resp	Avg
Aquaculture and Fisheries - BS	3	3.40	7	2.93	5	2.63	7	2.90	3	2.63	3	3.70	1	3.56	5	3.16
Conservation Law Enforcement - BS	22	2.84	19	2.76	31	2.90	34	2.87	33	2.92	34	3.00	37	2.74	32	3.10
Forestry - BS	2	2.67	1	3.30	5	2.65	2	2.75	7	2.80	1	3.60	4	3.11	1	2.30
Parks, Recreation and Ecotourism - BS	6	2.82	4	2.78	6	2.74	8	2.63	6	2.78			4	2.91	1	3.48
Wildlife - BS			2	2.82	4	3.12	5	2.93	4	3.23	7	3.17	1	1.50	7	3.54
Wildlife Biology - BS	4	2.8	10	2.95	12	3.12	16	3.11	16	3.36	18	3.48	16	3.14	15	3.34
Wildlife Conservation - BS	4	2.8	3	3.31	8	2.88	5	2.93	12	3.39	7	3.01	6	2.69	9	3.20

Standardized test scores (SAT, ACT) are not required for admission, but should be submitted if they are available. In light of that, I am also reporting the number of responses, which is the number of student who submitted scores.

Average SAT Comprehensive Scores for Responses

The SAT has under gone some changes in the past few years. Students who took the SAT before March 2005 received two scores (verbal and math) both on a scale from 200-800. So the total score available was 1600. After March of 2005 students received three sections (critical reading, math and writing), each of which are worth up to 800 points. The highest score available would be a 2400. In this factbook we are reporting the Composite score which is all three parts of the SAT summed. Tread lightly - the data may be a little skewed due to the fact that some students who entered in a given cohort since 2005 may have taken either the newer exams or the older ones. There is no way to tell which students may have taken the new or old SAT format.

	2003		2004		2005		2006		2007		2008		2009		2010	
	# Resp	Avg	# Resp	Avg	# Resp	Avg	# Resp	Avg	# Resp	Avg	# Resp	Avg	# Resp	Avg	# Resp	Avg
Aquaculture and Fisheries – BS	3	1140	11	933	5	986	5	968	1	1040	3	1270			2	1395
Conservation Law Enforcement - BS	28	936	30	957	33	963	29	958	13	1021	26	1461	29	1342	21	1470
Forestry – BS	3	943	2	725	4	777	2	1175	3	710	1	1550	4	1420		
Parks, Recreation and Ecotourism - BS	9	963	6	990	4	915	3	866	2	1050			1	1215		
Wildlife – BS	3	1156	7	1001	5	1000	3	1003			7	1562			5	1504
Wildlife Biology – BS	6	1086	11	1034	10	913	14	951	6	1005	14	1590	10	1549	13	1520
Wildlife Conservation – BS	8	1053	6	1048	5	1028	3	937	2	975	7	1405	2	1455	6	1401

Average ACT Comprehensive Scores for Responses

The ACT has four sections (English, math, reading comprehension and science, with an optional essay section). A perfect score is 36. Again, we are reporting the Composite score average for the number of responses.

	2003		2004		2005		2006		2007		2008		2009		2010	
	# Resp	Avg	# Resp	Avg	# Resp	Avg	# Resp	Avg	# Resp	Avg	# Resp	Avg	# Resp	Avg	# Resp	Avg
Aquaculture and Fisheries - BS															1	21
Conservation Law Enforcement - BS	2	22	1	31	1	12	3	19	2	20	2	20			5	23
Forestry – BS					1	13			1	23						
Parks, Recreation and Ecotourism - BS									1	21						
Wildlife – BS			1	26			2	14.5					1	17	2	22
Wildlife Biology – BS	1	21	2	19			3	22	5	22	2	23	4	20	2	21
Wildlife Conservation – BS	2	20	1	21			2	19	3	22	1	23	1	22	1	14

RETENTION

The table below gives the retention to the 2nd semester and retention to the 3rd semester by individual majors. The students no longer in the cohort are separated by “Left College” and “Moved to another Major”. Once a student moves to a different major, they do not become part of the original cohort. Once they move they are not tracked for retention. A cohort, once established, remains the same. However, the information on the status of students in the original cohort can be determined by the table. This will allow you to look for patterns of program movement.

Most retention initiatives and retention studies concentrate on the 1st to 2nd year retention. Nationally, this is where students choose to stay at an institution or move on.

AY	MAJOR	COHORT	RETENTION TO 2ND SEMESTER				RETENTION TO 3RD SEMESTER			
			RETURNED FROM ORIGINAL COHORT	MOVED TO ANOTHER MAJOR	LEFT COLLEGE	ENTERED FROM ANOTHER MAJOR	RETURNED FROM ORIGINAL COHORT	MOVED TO ANOTHER MAJOR	LEFT COLLEGE	ENTERED FROM ANOTHER MAJOR
2003	Aquaculture & Fisheries	8	8				7		1	
	Conservation Law Enforcement	54	42	1-AEL;1-EPOL;1-PRE;1-WCON	8	3-ES;1-FOR;1-AT;1-PRE;1-UND	37	1-EW;1-FOR	3	2-AS/ES
	Forestry	7	5	1-CLE;1-PRE			5		0	1-CLE
	Parks, Recreation and Ecotourism	10	7	1-CLE;1-EED	1	1-CLE;1-FOR	6	1-EED	0	
	Wildlife	10	2	3-WBIO;3-WCARD	2	2-UND;1-CLE;1-EW	1		1	1-BGS
	Wildlife Biology	5	3		2	2-ECOL;3-WILD; 1-AA/LS;1-EED	2	1-EED		
	Wildlife Conservation	8	6	1-CLE;1-UND		1-CLE	6		0	1-UND;1-WCARE

AY	MAJOR	COHORT	RETENTION TO 2ND SEMESTER				RETENTION TO 3RD SEMESTER			
			RETURNED FROM ORIGINAL COHORT	MOVED TO ANOTHER MAJOR	LEFT COLLEGE	ENTERED FROM ANOTHER MAJOR	RETURNED FROM ORIGINAL COHORT	MOVED TO ANOTHER MAJOR	LEFT COLLEGE	ENTERED FROM ANOTHER MAJOR
2004	Aquaculture & Fisheries	13	11		2	2-UND	9		2	
	Conservation Law Enforcement	40	35	1-PRE	4	1-LH;1-PRE;3-UND	30	1-AEL;1-PRE	3	
	Forestry	2	1		1	1-UND	1		0	
	Parks, Recreation and Ecotourism	8	5	1-CLE	2	1-CLE;1-UND	2	1-EED	2	1-CLE;1-WBIO
	Wildlife	7	5	2-WBIO	0	1-WCARE;2-UND	4	1-WCARE	0	1-UND;1
	Wildlife Biology	17	16	1-WILD	0	2-WILD;1-UND	9	1-ECO;1-PRE	5	
	Wildlife Conservation	7	5	1-EW	1	1-UND	4		1	
2005	Aquaculture & Fisheries	7	5	1-LH;1-WCON	0	1-CLE;1-WBIO;1-WCON	3		2	2-UND
	Conservation Law Enforcement	45	44	1-AQFI	0	1-AEL;1-UND;1-WBIO	25	1-EPOL	18	
	Forestry	6	6		0		2	1-WD	3	1-PRE
	Parks, Recreation and Ecotourism	8	7	1-AT	0	1-EW	5	1-FOR;1-EED	0	1-WBIO
	Wildlife	6	6		0	1-UND	5		1	1-FOR;3-WCARE

AY	MAJOR	COHORT	RETENTION TO 2ND SEMESTER				RETENTION TO 3RD SEMESTER			
			RETURNED FROM ORIGINAL COHORT	MOVED TO ANOTHER MAJOR	LEFT COLLEGE	ENTERED FROM ANOTHER MAJOR	RETURNED FROM ORIGINAL COHORT	MOVED TO ANOTHER MAJOR	LEFT COLLEGE	ENTERED FROM ANOTHER MAJOR
	Wildlife Biology	15	13	1-AQFI;1-CLE	0		8	1-PRE	4	1-UND
	Wildlife Conservation	10	7	1-WCARE;1-EH;1-AQFI	0	1-AQFI	6		1	
2006	Aquaculture & Fisheries	8	6		2		3		3	
	Conservation Law Enforcement	41	36	1-WILD	4	1-AT;1-BGS;1-MBIO	24		12	
	Forestry	4	2		2		1		1	2-WCON
	Parks, Recreation and Ecotourism	8	7		1		5		2	
	Wildlife	10	6		4	1-CLE;1-UND	5		1	1-WCARE
	Wildlife Biology	19	15		4		9		6	
	Wildlife Conservation	7	7		0	2-WCARE	3	2-FOR	2	
2007	Aquaculture & Fisheries	5	4		1	1-CLE;	0		4	
	Conservation Law Enforcement	41	35	1-AQFI;2-FOR;1WBIO	2	1-MBIO;2-UND;1-WILD;1-WBIO;1-WCARE	24	1-ES;1-WILD;1-SUSTDS	8	1-FOR;1-MBIO;1-UND

AY	MAJOR	COHORT	RETENTION TO 2ND SEMESTER				RETENTION TO 3RD SEMESTER			
			RETURNED FROM ORIGINAL COHORT	MOVED TO ANOTHER MAJOR	LEFT COLLEGE	ENTERED FROM ANOTHER MAJOR	RETURNED FROM ORIGINAL COHORT	MOVED TO ANOTHER MAJOR	LEFT COLLEGE	ENTERED FROM ANOTHER MAJOR
	Forestry	5	4		1	2-CLE; 1-UND	2	1-AS/ES;1-CLE	0	
	Parks, Recreation and Ecotourism	6	5		1	1-EPOL;1-UND	4		1	
	Wildlife	4	2	1-CLE	1	2-UND;1-WCARE	1	1-CWILD	0	1-CLE;2-UND
	Wildlife Biology	20	17	1-CLE	2	1-CLE;	9	1-AQFI;1-PRE;1-CLE	5	
	Wildlife Conservation	8	6	1-WCARE	1	3-WCARE;	6			
2008	Aquaculture & Fisheries	3	3			1-ES;1-WBIO;2-MBIO	3			1-UND
	Conservation Law Enforcement	39	34	1-WILD;1-WCON	3	1-UND	33		1	2-WCON
	Forestry	2	2			1-UND	1		1	
	Parks, Recreation and Ecotourism	4	4			1-AEL;1-WILD;1-UND	2	1-AEL	1	
	Wildlife	8	3	1-CWILD;1-EW;1-PRE	2	1-CLE;1-EED;1-WBIO	2	1-T&L		2-CWILD

AY	MAJOR	COHORT	RETENTION TO 2ND SEMESTER				RETENTION TO 3RD SEMESTER			
			RETURNED FROM ORIGINAL COHORT	MOVED TO ANOTHER MAJOR	LEFT COLLEGE	ENTERED FROM ANOTHER MAJOR	RETURNED FROM ORIGINAL COHORT	MOVED TO ANOTHER MAJOR	LEFT COLLEGE	ENTERED FROM ANOTHER MAJOR
	Wildlife Biology	20	13	1-AQFI;1-ECOL;1-CWILD;1-WILD;1-LH;1-WCON	1	1-ES	11	1-MBIO;1-AGRI		1-ECO; 1-UND
	Wildlife Conservation	7	5		2	1-CLE;1-WBIO	3	2-CLE		
2009	Aquaculture & Fisheries	1	1				1			
	Conservation Law Enforcement	38	34	1-CWILD	3		32	1-FOR;1-PRE		1-CWILD
	Forestry	4	4				1		3	
	Parks, Recreation and Ecotourism	4	3	1-CLE			2		1	1-CLE;1-UND
	Wildlife	3	3				1	1-CWILD	1	5-WILD
	Wildlife Biology	14	12	1-WILD	1		7		5	3-CWILD
	Wildlife Conservation	6	5	1-WBIO			3	1-CWILD	1	4-WCONS

AY	MAJOR	COHORT	RETENTION TO 2ND SEMESTER				RETENTION TO 3RD SEMESTER			
			RETURNED FROM ORIGINAL COHORT	MOVED TO ANOTHER MAJOR	LEFT COLLEGE	ENTERED FROM ANOTHER MAJOR	RETURNED FROM ORIGINAL COHORT	MOVED TO ANOTHER MAJOR	LEFT COLLEGE	ENTERED FROM ANOTHER MAJOR
2010	Aquaculture & Fisheries	5	4		1					
	Conservation Law Enforcement	35	31		4					
	Forestry	2	2							
	Parks, Recreation and Ecotourism	1	1			1-CWILD; 1WBIO				
	Wildlife	7	5	1-WBIO	1	3-UND; 3- CWILD; 1- WBIO				
	Wildlife Biology	16	8	2-PARKS;1- WCONS;1- WILD	4	1-UND; 2- WILD				
	Wildlife Conservation	11	9		2	1-UND; 3- CWILD; 1- WBIO				

GRADUATION RATES

Graduation rates are based on the total entering cohort for each fall semester separated by incoming and transfer students. Total by center is also included. These graduation rates can include students who may have transferred into the specific major while attending the college.

FOUR YEAR RATES

Fall Headcount Incoming Class	189				178				182				185			
	2003		2004		2005		2006		2003		2004		2005		2006	
	INCOMING (166)		TRANSFERS (23)		INCOMING (150)		TRANSFERS (28)		INCOMING (151)		TRANSFERS (31)		INCOMING (152)		TRANSFERS (33)	
	#	% of Cohort	#	% of Cohort	#	% of Cohort	#	% of Cohort	#	% of Cohort	#	% of Cohort	#	% of Cohort	#	% of Cohort
Aquaculture and Fisheries - BS	3	2%			6	4%			1	1%	1	3%	1	1%		
Conservation Law Enforcement - BS	21	13%	5	22%	16	11%	4	14%	15	10%	1	3%	22	14%	3	9%
Forestry - BS	3	2%			3	2%			3	2%	1	3%				
Parks, Recreation and Ecotourism - BS	6	4%			5	3%			3	2%	2	6%			3	9%
Wildlife - BS	9	5%	1	4%	11	7%	1	4%	8	5%	1	3%	4	3%	2	6%
Wildlife Biology - BS	3	2%			3	2%	2	7%	5	3%	1	3%	2	1%	3	9%
Wildlife Conservation - BS	5	3%	1	4%	2	1%			1	1%	1	3%	1	1%		
TOTALS BY CENTER	50	30%	7	30%	46	31%	7	25%	36	24%	8	26%	30	20%	11	33%

SIX YEAR RATES

Instead of reporting all the data again, I am reporting only the additional graduates that fall into the six year rate. If no data is reported, then the six year rate is the same as the four year rate.

Fall Headcount Incoming Class	189				178				182					
	2003		2004		2005		2006		2003		2004		2005	
	INCOMING (166)		TRANSFER (23)		INCOMING (150)		TRANSFER (28)		INCOMING (151)		TRANSFER (31)			
	#	% of Cohort	#	% of Cohort	#	% of Cohort	#	% of Cohort	#	% of Cohort	#	% of Cohort	#	% of Cohort
Aquaculture and Fisheries - BS	5	3%			7	5%			3	2%				
Conservation Law Enforcement - BS	22	13%			18	12%			18	12%				
Forestry - BS	4	2%												
Parks, Recreation and Ecotourism - BS	7	4%	1	4%					4	3%				
Wildlife - BS	13	8%			13	9%			10	7%				
Wildlife Biology - BS					4	3%			6	4%				
Wildlife Conservation - BS	6	4%												

Center for Sustainability and Global Change

Associated Curricula

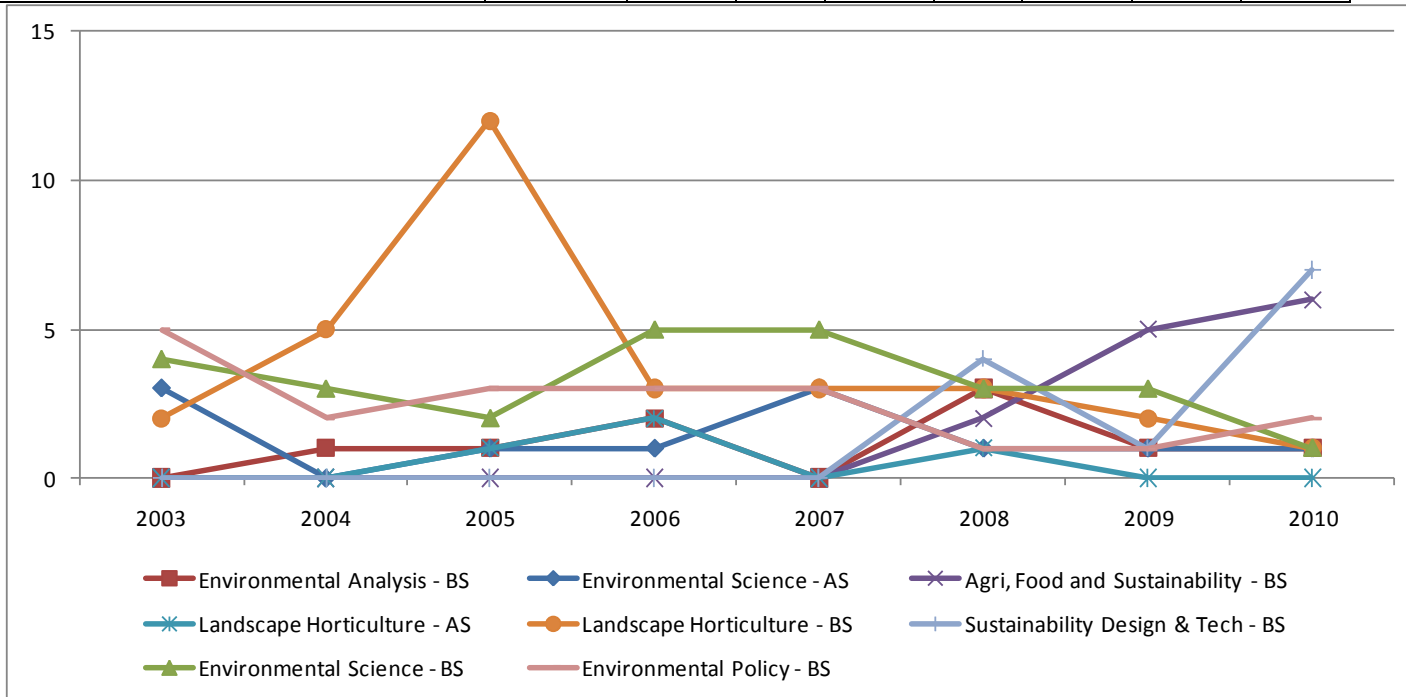
Environmental Analysis (BS)
Environmental Policy (BS)
Environmental Science (BS)
Environmental Science (AS)
Agriculture, Food, and Sustainability (BS)
Landscape Horticulture (AS)
Landscape Horticulture (BS)
Sustainability Design and Technology (BS)

Enrollment

The data and charts below show enrollments in majors based on fall entering cohorts. A cohort is comprised of all students entering Unity College for the first time in the fall semester of an academic year.

Headcount

	189	178	182	185	203	194	198	179
	2003	2004	2005	2006	2007	2008	2009	2010
Environmental Analysis - BS	0	1	1	2	0	3	1	1
Environmental Policy - BS	5	2	3	3	3	1	1	2
Environmental Science - BS	4	3	2	5	5	3	3	1
Environmental Science - AS	3	0	1	1	3	1	1	1
Agri, Food and Sustainability - BS	0	0	0	0	0	2	5	6
Landscape Horticulture - AS	0	0	1	2	0	1	0	0
Landscape Horticulture - BS	2	5	12	3	3	3	2	1
Sustainability Design & Tech - BS	0	0	0	0	0	4	1	7



Percentage Enrolled of Total Headcount

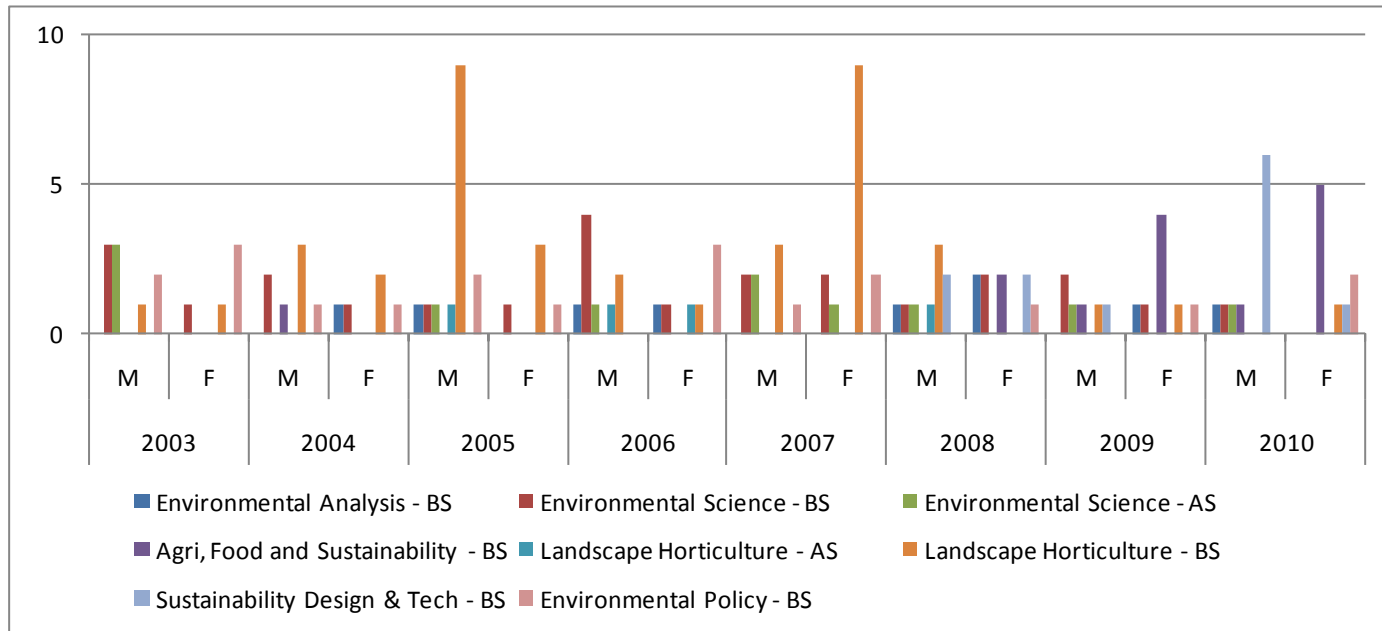
% of Cohort	2003	2004	2005	2006	2007	2008	2009	2010
Environmental Analysis - BS	0%	1%	1%	1%	0%	2%	1%	1%
Environmental Policy – BS	3%	1%	2%	2%	1%	1%	1%	1%
Environmental Science – BS	2%	2%	1%	3%	3%	2%	2%	1%
Environmental Science - AS	2%	0%	1%	1%	2%	1%	1%	1%
Agri, Food and Sustainability-BS						1%	3%	3%
Landscape Horticulture - AS	0%	0%	1%	1%	0%	1%	0%	0%
Landscape Horticulture - BS	1%	3%	7%	2%	2%	2%	1%	1%
Sustainability Design & Tech-BS						2%	1%	4%

Students Enrolled in the Student Academic Growth Experience

SAGE Enrollment	2003	2004	2005	2006	2007	2008	2009	2010
Environmental Analysis – BS								
Environmental Policy – BS	1			1				
Environmental Science – BS		1						
Environmental Science - AS	1			1		1		
Agri, Food and Sustainability-BS								
Landscape Horticulture - AS								
Landscape Horticulture - BS	1	3		1				
Sustainability Design & Tech-BS								

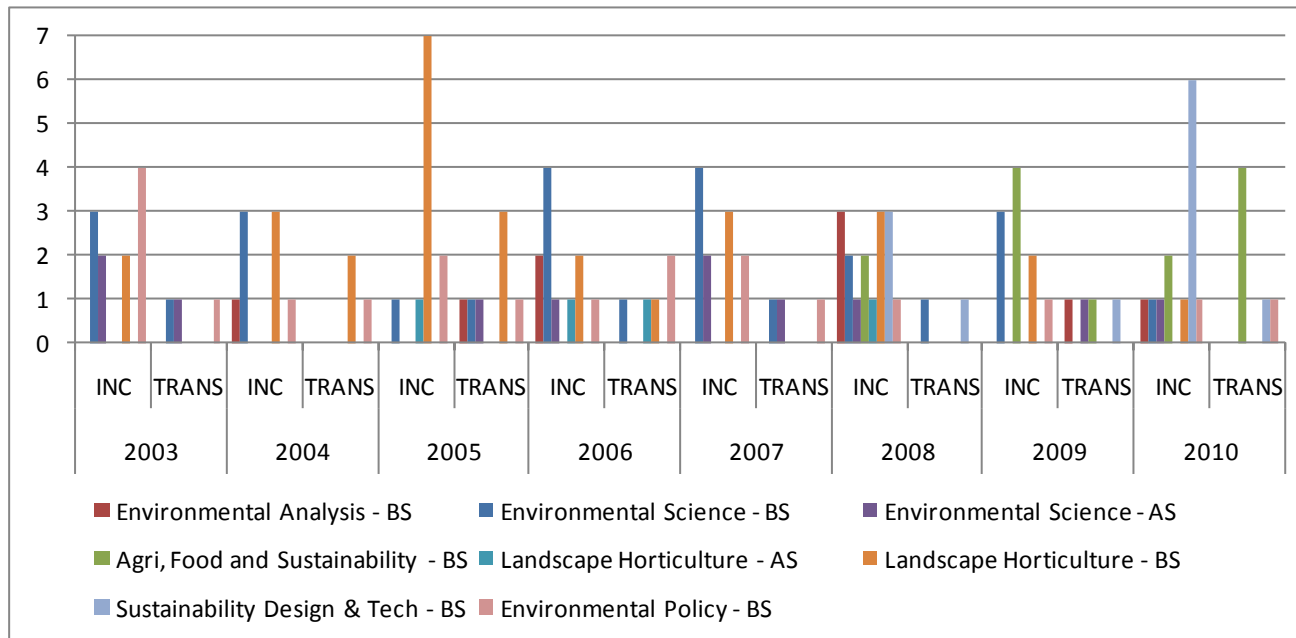
Gender

	2003		2004		2005		2006		2007		2008		2009		2010	
	M	F	M	F	M	F	M	F	M	F	M	F	M	F	M	F
Environmental Analysis - BS	0	0	0	1	1	0	1	1	0	0	1	2	0	1	1	0
Environmental Policy – BS	2	3	1	1	2	1	0	3	1	2	0	1	0	1	0	2
Environmental Science - BS	3	1	2	1	1	1	4	1	2	2	1	2	2	1	1	0
Environmental Science - AS	3	0	0	0	1	0	1	0	2	1	1	0	1	0	1	0
Agri, Food and Sustainability - BS	0	0	1	0	0	0	0	0	0	0	0	2	1	4	1	5
Landscape Horticulture - AS	0	0	0	0	1	0	1	1	0	0	1	0	0	0	0	0
Landscape Horticulture - BS	1	1	3	2	9	3	2	1	3	9	3	0	1	1	0	1
Sustainability Design & Tech - BS	0	0	0	0	0	0	0	0	0	0	2	2	1	0	6	1



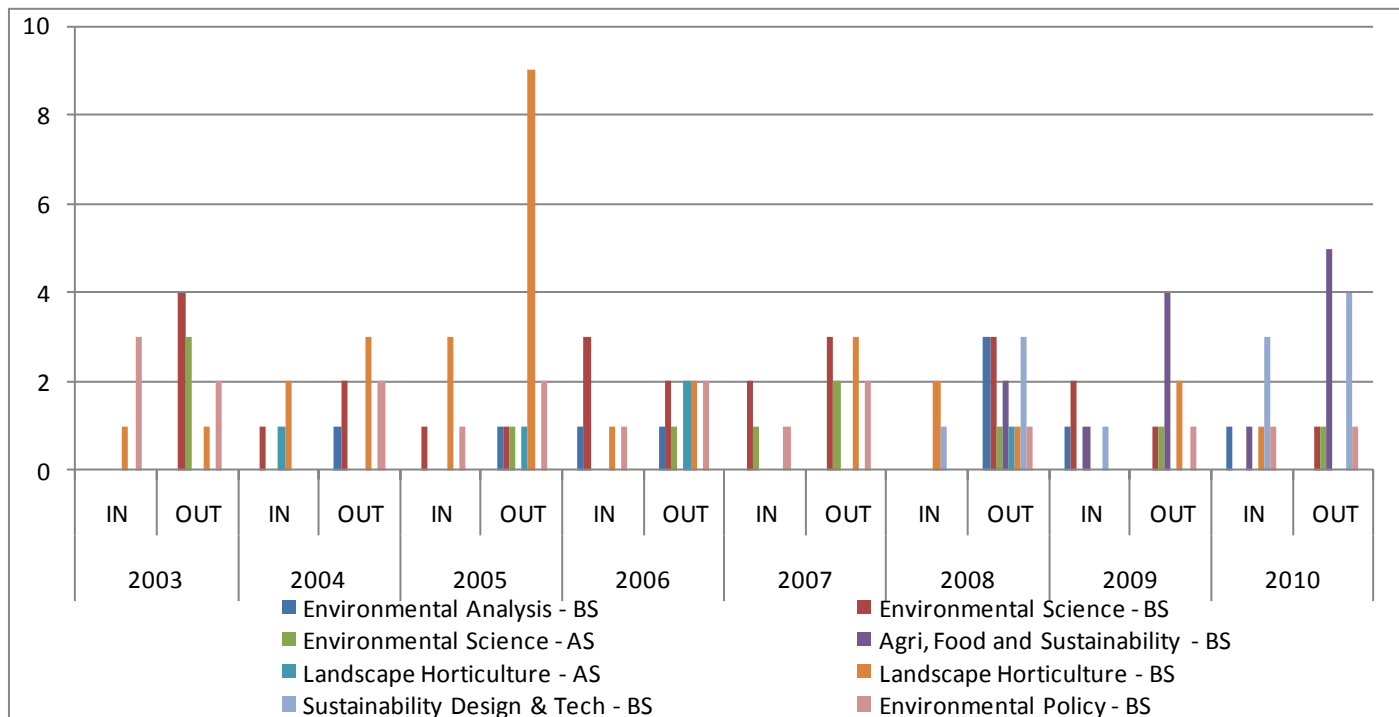
Incoming/Transfer

	2003		2004		2005		2006		2007		2008		2009		2010	
	INC	TRANS	INC	TRANS	INC	TRANS	INC	TRANS	INC	TRANS	INC	TRANS	INC	TRANS	INC	TRANS
Environmental Analysis - BS	0	0	1	0	0	1	2	0	0	0	3	0	0	1	1	0
Environmental Policy – BS	4	1	1	1	2	1	1	2	2	1	1	0	1	0	1	1
Environmental Science - BS	3	1	3	0	1	1	4	1	4	1	2	1	3	0	1	0
Environmental Science - AS	2	1	0	0	0	1	1	0	2	1	1	0	0	1	1	0
Agri, Food and Sustainability - BS	0	0	0	0	0	0	0	0	0	0	2	0	4	1	2	4
Landscape Horticulture - AS	0	0	0	0	1	0	1	1	0	0	1	0	0	0	0	0
Landscape Horticulture - BS	2	0	3	2	9	3	2	1	3	0	3	0	2	0	1	0
Sustainability Design & Tech - BS	0	0	0	0	0	0	0	0	0	0	3	1	0	1	6	1



IN STATE/OUT OF STATE

	2003		2004		2005		2006		2007		2008		2009		2010	
	IN	OUT	IN	OUT	IN	OUT	IN	OUT	IN	OUT	IN	OUT	IN	OUT	IN	OUT
Environmental Analysis - BS	0	0	0	1	0	1	1	1	0	0	0	3	1	0	1	0
Environmental Policy - BS	3	2	0	2	1	2	1	2	1	2	0	1	0	1	1	1
Environmental Science - BS	0	4	1	2	1	1	3	2	2	3	0	3	2	1	0	1
Environmental Science - AS	0	3	0	0	0	1	0	1	1	2	0	1	0	1	0	1
Agri, Food and Sustainability - BS	0	0	0	0	0	0	0	0	0	0	0	2	1	4	1	5
Landscape Horticulture - AS	0	0	1	0	0	1	0	2	0	0	0	1	0	0	0	0
Landscape Horticulture - BS	1	1	2	3	3	9	1	2	0	3	2	1	0	2	1	0
Sustainability Design & Tech - BS	0	0	0	0	0	0	0	0	0	0	1	3	1	0	3	4



Average HS GPA College wide for Cohorts

	2003		2004		2005		2006		2007		2008		2009		2010	
	#Resp	Avg	# Resp	Avg	# Resp	Avg	# Resp	Avg	# Resp	Avg	# Resp	Avg	# Resp	Avg	# Resp	Avg
AVG HS GPA	92	2.95	88	2.93	133	2.92	139	2.94	170	3.02	177	3.13	179	3.16	165	3.24
AVG SAT	138	997	134	1002	124	987	107	965	59	962	130	1490	134	1502	118	1530
AVG ACT	14	22	11	24	3	14	16	20	18	23	21	22	28	22	27	24
Cohort Population	189		178		182		185		203		194		198		179	

Average High School Grade Point Average for Responses

	2003		2004		2005		2006		2007		2008		2009		2010	
	# Resp	Avg	# Resp	Avg	# Resp	Avg	# Resp	Avg	# Resp	Avg	# Resp	Avg	# Resp	Avg	# Resp	Avg
Environmental Analysis - BS					1	2.46	2	3.1			3	3.45			1	2.17
Environmental Policy - BS	1	3.05	1	2.96	2	3.07	3	3.07	2	3.7	1	3.62	3	3.40		
Environmental Science - BS			3	2.92	1	3.40	4	3.18	4	2.9	2	3.55	1	1.82	1	3.18
Environmental Science - AS			1	2.7			1	2.20	1	3.3	1	2.00	6	3.64	1	3.53
Agri, Food and Sustainability - BS											2	3.37			5	3.25
Landscape Horticulture - AS					1	3.09	2	2.67			1	2.69	2	3.21		
Landscape Horticulture - BS			2	2.77	10	2.86	2	2.45	2	3.27	2	2.90	1	3.19	1	3.70
Sustainability Design & Tech - BS											3	3.21	6	2.53	7	2.92

Standardized test scores (SAT, ACT) are not required for admission, but should be submitted if they are available. In light of that, I am also reporting the number of responses, which is the number of student who submitted scores.

Average SAT Comprehensive Scores for Responses

The SAT has under gone some changes in the past few years. Students who took the SAT before March 2005 received two scores (verbal and math) both on a scale from 200-800. So the total score available was 1600. After March of 2005 students received three sections (critical reading, math and writing), each of which are worth up to 800 points. The highest score available would be a 2400. In this factbook we are reporting the Composite score which is all three parts of the SAT summed. Tread lightly - the data may be a little skewed due to the fact that some students who entered in a given cohort since 2005 may have taken either the newer exams or the older ones. There is no way to tell which students may have taken the new or old SAT format.

	2003		2004		2005		2006		2007		2008		2009		2010	
	# Resp	Avg	# Resp	Avg	# Resp	Avg	# Resp	Avg	# Resp	Avg	# Resp	Avg	# Resp	Avg	#Resp	Avg
Environmental Analysis - BS					1	1040	2	1135			3	1403			1	1580
Environmental Policy - BS	5	1124	1	1290	1	1140	1	1000			1	1480	1	1720		
Environmental Science - BS			3	1016	2	1105	3	1066	3	1030	1	1680	1	1050	1	1860
Environmental Science - AS	1	1250			1	900	1	770					6	1676		
Agri, Food and Sustainability - BS											1	1860			4	1680
Landscape Horticulture - AS					1	1020	1	530			1	1140				
Landscape Horticulture - BS			4	997	10	977					1	1050	2	1570	1	1610
Sustainability Design & Tech - BS											3	1563			5	1484

Average ACT Comprehensive Scores for Responses

The ACT has four sections (English, math, reading comprehension and science, with an optional essay section). A perfect score is 36. Again, we are reporting the Composite score average for the number of responses.

	2003		2004		2005		2006		2007		2008		2009		2010	
	# Resp	Avg	# Resp	Avg	# Resp	Avg	# Resp	Avg	# Resp	Avg	# Resp	Avg	#Resp	Avg	#Resp	Avg
Environmental Analysis - BS																
Environmental Policy - BS																
Environmental Science - BS									1	29	1	22				
Environmental Science - AS																
Agri, Food and Sustainability - BS																
Landscape Horticulture - AS																
Landscape Horticulture - BS											1	15	1	22		
Sustainability Design & Tech - BS																

RETENTION

The table below gives the retention to the 2nd semester and retention to the 3rd semester by individual majors. The students no longer in the cohort are separated by “Left College” and “Moved to another Major”. Once a student moves to a different major, they do not become part of the original cohort. Once they move they are not tracked for retention. A cohort, once established, remains the same. However, the information on the status of students in the original cohort can be determined by the table. This will allow you to look for patterns of program movement.

Most retention initiatives and retention studies concentrate on the 1st to 2nd year retention. Nationally, this is where students choose to stay at an institution or move on. The Fall 2007 data will be completed during the fall semester 2008 after determining which students returned for their 3rd semester.

AY	MAJOR	COHORT	RETENTION TO 2ND SEMESTER				RETENTION TO 3RD SEMESTER			
			RETURNED FROM ORIGINAL COHORT	MOVED TO ANOTHER MAJOR	LEFT COLLEGE	ENTERED FROM ANOTHER MAJOR	RETURNED FROM ORIGINAL COHORT	MOVED TO ANOTHER MAJOR	LEFT COLLEGE	ENTERED FROM ANOTHER MAJOR
2003	Environmental Analysis	0	0				0		0	
	Environmental Policy	5	2	2-WCARE	1	1-UND;1-CLE;1-EW	1		1	
	Environmental Science	4	0	3-CLE;1-ECOL			0		0	1-EED
	AS/Environmental Science	3	3				0	1-AT;2-CLE	0	1-UND
	AS/Landscape Horticulture	0	0				0		0	
	Landscape Horticulture	2	1		1		1		0	
2004	Environmental Analysis	1	1		0	1-UND	1		0	
	Environmental Policy	2	2		0		1		1	
	Environmental Science	3	2	1-LH	0	1-WCARE	2		0	
	AS/Environmental Science	0								
	AS/Landscape Horticulture	0								
	Landscape Horticulture	5	4	1-CLE	0	1-ES;1-UND	3		1	
2005	Environmental Analysis	1	1		0		1		0	

AY	MAJOR	COHORT	RETENTION TO 2ND SEMESTER				RETENTION TO 3RD SEMESTER			
			RETURNED FROM ORIGINAL COHORT	MOVED TO ANOTHER MAJOR	LEFT COLLEGE	ENTERED FROM ANOTHER MAJOR	RETURNED FROM ORIGINAL COHORT	MOVED TO ANOTHER MAJOR	LEFT COLLEGE	ENTERED FROM ANOTHER MAJOR
	Environmental Policy	3	2	1-UND	0		0		2	1-CLE
	Environmental Science	2	1		1		1		0	
	AS/Environmental Science	1	1				1		0	
	AS/Landscape Horticulture	1	1		0		1		0	
	Landscape Horticulture	12	12		0	1-AQFI;1-UND	7	1-AT;1-EH	3	
2006	Environmental Analysis	2	2		0	1-WCARE	2		0	
	Environmental Policy	3	2	1-EED	0		1		1	
	Environmental Science	5	5		0		3		2	
	AS/Environmental Science	1	1		0		1		0	
	AS/Landscape Horticulture	2	2		0		1		1	
	Landscape Horticulture	3	3		0		1		2	
2007	Environmental Analysis	0								
	Environmental Policy	3	1	1-PRE	1		0			
	Environmental Science	5	3	1-AT	1	2-UND;	3		0	1-CLE;2-UND
	AS/Environmental Science	3	3		0		2		1	1-FOR
	AS/Landscape Horticulture	0								
	Landscape Horticulture	3	3		0	1-UND	3		0	1-UND
	Sustainability Design & Technology									1-CLE
2008	Environmental Analysis	3	2	1-ECOL			1		1	1-ECO
	Environmental Science	3	1	1-AQFI;1-WBIO			0		1	
	Environmental Policy	1	1				1			
	AS/Environmental Science	1	1				0		1	

	AS/Landscape Horticulture	1	1				1				
			RETENTION TO 2ND SEMESTER				RETENTION TO 3RD SEMESTER				
AY	MAJOR	COHORT	RETURNED FROM ORIGINAL COHORT	MOVED TO ANOTHER MAJOR	LEFT COLLEGE	ENTERED FROM ANOTHER MAJOR	RETURNED FROM ORIGINAL COHORT	MOVED TO ANOTHER MAJOR	LEFT COLLEGE	ENTERED FROM ANOTHER MAJOR	
	Landscape Horticulture	3	3			1-WBIO	2	1-AGRI			
	Agriculture, Food and Sustainability	2	2				1		1	1-LH;1-WBIO	
	Sustainability Design & Technology	4	4				4				
2009	Environmental Analysis	1	1				0		1		
	Environmental Policy	1	1				1				
	Environmental Science	3	3				2		1		
	AS/Environmental Science	1	1				1				
	AS/Landscape Horticulture	0					0				
	Landscape Horticulture	2	2				1		1		
	Agriculture, Food and Sustainability	5	4	1-SDESN			3		1	1-CWILD;1-UND	
	Sustainability Design & Technology	1	1			1-AGRI	1			1-UND	
2010	Environmental Analysis	1	1								
	Environmental Policy	2	1	1-EWRIT							
	Environmental Science	1	0	1-SUST							
	AS/Environmental Science	1	1								
	AS/Landscape Horticulture	0	0								
	Landscape Horticulture	1	1								
	Agriculture, Food and Sustainability	6	4		2						
	Sustainability Design & Technology	7	6		1	1-ES					

GRADUATION RATES

Graduation rates are based on the total entering cohort for each fall semester separated by incoming and transfer students. Total by center is also included. These graduation rates can include students who may have transferred into the specific major while attending the college.

FOUR YEAR RATES

Fall Headcount Incoming Class	189				178				182				185			
	2003				2004				2005				2006			
	INCOMING (166)		TRANSFERS (23)		INCOMING (150)		TRANSFERS (28)		INCOMING (151)		TRANSFERS (31)		INCOMING (152)		TRANSFERS (33)	
	#	% of Cohort	#	% of Cohort	#	% of Cohort	#	% of Cohort	#	% of Cohort	#	% of Cohort	#	% of Cohort	#	% of Cohort
Environmental Analysis - BS													1	1%		
Environmental Policy - BS	3	2%	1	4%					4	3%			1	1%	1	3%
Environmental Science - BS	1	1%											1	1%	1	3%
Environmental Science - AS	1	1%			1	1%			1	1%	1	3%				
Agri, Food and Sustainability - BS																
Landscape Horticulture - AS																
Landscape Horticulture - BS	2	1%			1	1%	1	4%	4	3%	1	3%	2	1%		
Sustainability Design & Tech - BS																
TOTALS BY CENTER	7	4%	1	4%	2	1%	1	4%	9	6%	2	6%	5	3%	2	6%

SIX YEAR RATES

Instead of reporting all the data again, I am reporting only the additional graduates that fall into the six year rate. If no data is reported, then the six year rate is the same as the four year rate.

Fall Headcount Incoming Class	189				178				182			
	2003				2004				2005			
	INCOMING (166)		TRANSFER (23)		INCOMING (150)		TRANSFER (28)		INCOMING (151)		TRANSFER (31)	
	#	% of Cohort	#	% of Cohort	#	% of Cohort	#	% of Cohort	#	% of Cohort	#	% of Cohort
Environmental Analysis - BS												
Environmental Policy - BS									5	3%		
Environmental Science - BS					1	1%						
Environmental Science - AS												
Agri, Food and Sustainability - BS												
Landscape Horticulture - AS												
Landscape Horticulture - BS												
Sustainability Design & Tech - BS												

UNDECIDED DATA

The table below include the original cohort enrollment as well as the retention data for students who entered Unity College with an undecided major.

AY	MAJOR	COHORT	RETENTION TO 2ND SEMESTER				RETENTION TO 3RD SEMESTER				CENTER					
			RETURNED FROM ORIGINAL COHORT	MOVED TO ANOTHER MAJOR	LEFT COLLEGE	ENTERED FROM ANOTHER MAJOR	RETURNED FROM ORIGINAL COHORT	MOVED TO ANOTHER MAJOR	LEFT COLLEGE	ENTERED FROM ANOTHER MAJOR						
2003	Undecided	16	6	1-ECOL;1-WCARE;1-EPOL;2-WILD;1-CLE	4	2-ECOL;1-AT	1	1-AEL;1-AS/ES;1-EHUM;1-WCON	1							
2004	Undecided	21	6	2-AQFI;3-CLE;1-EANAL;1-FOR;1-LH;1-PRE;2-WILD;1-WBIO;2-WCARE;1-WCON	0		4	1-WILD;1-A	0	1-WCARE						
2005	Undecided	15	12	1-CLE;1-LH;1-WD	0	1-EPOL	4	1-WBIO;2-AQFI	5							
2006	Undecided	12	9	1-WILD	2		2		7							
2007	Undecided	24	9	2-WILD;2-AEL;1-AT;1-FOR;2-CLE;2-ES;1-LH;1-PRE	3		2	1-WILD;2-ES;1-CLE;1-AT;1-AEL;1-LH								
2008	Undecided	15	9	1-AEL;1-CWILD;1-CLE;1-ECOL	2		5	1-ECO; 1-WBIO	2							
2009	Undecided	8	5	1-ECO; 1-AQFI; 1-WBIO			0	1-AGRI;1-AEL;1-GS;1-PARK;1-SUST;1-CWILD	2							
2010	Undecided	10	2	2-AEL;1-CWILD;1-WBIO;1-WCON;3-WILD												

TOTAL ENROLLMENT IN MAJORS BY STUDENT BODY

The chart below is the enrollment in each major for the entire student body for each fall semester.

		2001	2002	2003	2004	2005	2006	2007	2008	2009	2010
AA	Liberal Studies	3	3	3	4	6	1	2	2	0	1
AS	Environmental Science	4	6	4	2	2	6	5	6	2	2
AS	Landscape Horticulture									1	1
BA	Environmental Humanities				1	3	6	5	2	7	0
BA	Environmental Writing			1	6	18	23	16	7	2	4
BGS	General Studies			2	7	1	4	1	2	1	3
BS	Adventure Education Leadership			26	42	49	49	50	46	37	25
BS	Adventure Therapy			2	8	9	15	16	18	11	11
BS	Agriculture, Food, and Sustainability								2	8	15
BS	Aquaculture and Fisheries			9	27	22	31	22	15	16	18
BS	Captive Wildlife Care and Education								47	117	119
BS	Conservation Law Enforcement	128	122	139	142	132	116	113	118	122	122
BS	Ecology	18	18	19	18	14	12	13	10	9	7
BS	Environmental Analysis	4	5	3	3	2	4	4	7	6	4
BS	Environmental Biology	16	22	17	11	9	7	4	4	3	3
BS	Environmental Education	22	18	23	24	18	13	11	7	7	8
BS	Environmental Policy	14	7	15	12	12	7	5	7	4	6
BS	Environmental Science					5	10	11	14	11	11
BS	Forestry	24	28	19	16	15	15	20	10	11	8
BS	Landscape Horticulture			9	15	20	14	13	14	10	12
BS	Marine Biology						6	14	22	42	43
BS	Parks, Recreation and Ecotourism			14	30	27	29	27	22	19	16
BS	Sustainability Design and Technology								6	6	13
BS	Teaching and Learning									3	8
BS	Wildlife	58	32	23	16	24	40	38	29	26	31
BS	Wildlife Biology	8	23	25	35	37	43	45	46	37	45
BS	Wildlife Care and Education	8	16	36	37	49	50	57	28	2	1
BS	Wildlife Conservation	4	18	21	28	28	28	30	26	22	32
	Undecided	1	5	20	31	22	18	30	24	16	12
	Non-matriculated							6	3	6	3
	Total	312	323	430	515	524	547	558	544	564	584